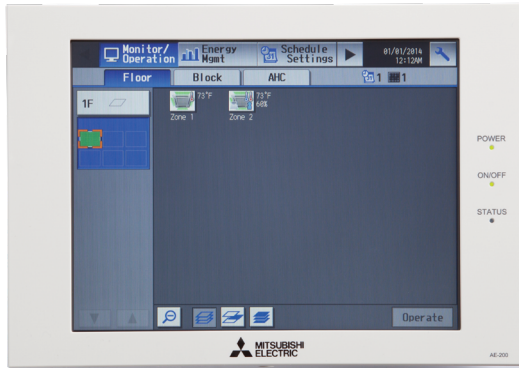


Job Name:

System Reference:

Date:



AE-200A

- AE-200A is the Master Controller
- Master Controller can operate and monitor up to 50 indoor units
- Expansion Controllers can expand an AE-200A to operate and monitor up to 50 additional indoor units through the touchscreen or web browser
- Network up to three AE-50A or EW-50A to one AE-200A to allow the AE-200A to manage up to 200 indoor units

OPTIONAL LICENSES

- SW-BACnet Master: BACnet Function
 - Connected air conditioning units can be monitored and operated not only from the existing web browser or the AE-200/AE-50's LCD, but also from the building management system using the BACnet® communication protocol. See SW-BACnet Data Sheet for more information.
- SW-Charge Master: Energy Allocation
 - The apportioned electricity billing function is an electric energy apportionment system that apportions electric energy using input from electricity meters with a pulse generator function. The respective amounts of electric energy can be apportioned based on the operating status and capacity of each tenant. See SW-Charge Data Sheet for more information.
- SW-PWeb Master: Online Personal Browser
 - Allows tenant managers and general users to control their respective zone conditions via a networked PC, tablet, or mobile phone with or without local remote controllers installed in the space. See SW-PWeb Data Sheet for more information.

SPECIFICATIONS

- Supports dual set point functionality (connected equipment dependent)
- Displays:
 - CITY MULTI® compressor speed and hi/low pressure
 - AdvancedHVAC Controller (DC-A2IO) input/output status
 - Indoor unit free contact input/output status
 - Space temperature and humidity (from Smart ME or AI controller)
 - Error code (Can be emailed automatically to specified recipients)
 - Unoccupied setback up temperature range
- Functions
 - Hold function (temporarily disables schedules indoor unit model dependent)
 - Initial setting
 - Operation data back-up
- Permits or prohibits remote controller functions:
 - On/Off

- Change Operation Mode
 - Change Set Point Temperature
 - Filter Status
 - Change Fan Speed
 - Change Air Direction
 - External input/output signals can be used for batch operations such as Start/Stop and Emergency Stop (requires PAC-YG10HA)
 - Pulse signal input can obtain watt-hour meter, billing data and energy management data based on the cumulative number of pulse signal pulse signals directly input from a metering device
 - Temperature set point range limits can be set for local remote controllers
 - User defined indoor unit functions:
 - On/Off
 - Monitoring and Operation
 - Operation mode:
 - Auto* (Dual or Single set point)
 - Heat
 - Fan
 - Drying
 - Setback*
- Note: *R2 Series only (connected equipment dependent)
- Temperature Setting
 - Fan Speed
 - Airflow Direction
 - Monitoring and Control:
 - CITY MULTI® indoor units
 - M & P Series units (requires M-Net adapter)
 - Lossnay® units
 - PWFY hydronic heat pump units
 - DIDO controllers
 - CITY MULTI® DOAS
 - Interlock setting enables integration of general equipment inputs/outputs and indoor units
 - Scheduling
 - Daily
 - Annually
 - Five pattern of weekly seasonal schedule
 - Twenty four scheduled events per day, indoor unit model dependent:
 - ON/OFF
 - Mode
 - Temperature Setting
 - Vane Direction
 - Fan
 - Speed
 - Operation Prohibits
 - Trend data:
 - Fan operation time
 - Thermo-on time
 - Set temperature
 - Room temperature
 - AI Controller temperature and humidity (requires PAC-YG63-MCA, 2 inputs total for each controller)
 - Memory back up via USB (universal serial bus)
 - Memory back up via LAN (local area network) port

AE-200A - SPECIFICATIONS, CONT.

AE-200A CENTRALIZED CONTROLLER

| Item | Specifications | | |
|--------------------------------|--|---|-------------------------------------|
| Power Supply | Rated input | 100–240 VAC ± 10%; 0.3–0.2 A 50/60 Hz Single-phase | |
| | Fuse | 250 VAC 6.3 A Time-Lag type (IEC 60127-2S.S.5) | |
| M-NET power feeding capability | | No specifications**Only an MN converter can be connected. | |
| Ambient conditions | Temperature | Operating Range | 0° C to +40° C (+32° F to +104° F) |
| | | Non-operating Range | -20° C to +60° C (-4° F to +140° F) |
| | Humidity | 30% to 90% RH (no condensation) | |
| Weight | 2.3 kg (5-5/64 lbs) | | |
| Dimensions (W x H x D) | 11-5/32 x 7-55/64 x 2-17/32 in. (284 x 200 x 65 mm) | | |
| Installation conditions | Indoor only **To be used in a business office or similar environment | | |

WEB BROWSER REQUIREMENTS

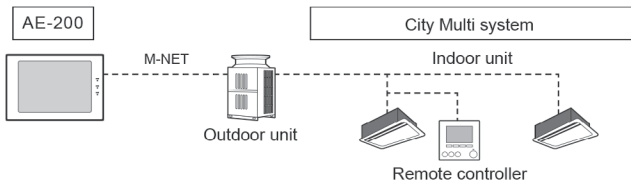
| Item | Requirements |
|------------------------------|--|
| CPU | 1 GHz or faster |
| Memory | 512 MB or more |
| Screen Resolution | 1024 x 768 or higher recommended |
| Compatible Browser | Windows® Microsoft® Internet Explorer 8.0 Microsoft® Internet Explorer 9.0 Microsoft® Internet Explorer 10.0 Microsoft® Internet Explorer 11.0 **Java execution environment is required. (Oracle® Java Plug-in Ver. 1.8.0_60) **Install Oracle® Java Plug-in that is appropriate for your operating system. When using a 64-bit Internet Explorer, install a 64-bit Java Plug-in. **The version of the Oracle® Java Plug-in can be verified by clicking [Java] in the Control Panel. |
| Onboard LAN Port or LAN Card | 100 BASE-TX |
| 100 BASE-TX | e.g., mouse |

NOTES:

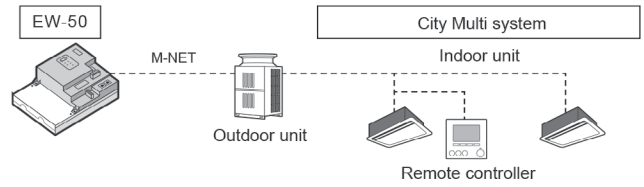
MODEL: AE-200A - SYSTEM CONFIGURATION

CONTROLLING 50 OR FEWER UNITS OF EQUIPMENT

1. AE-200



2. EW-50

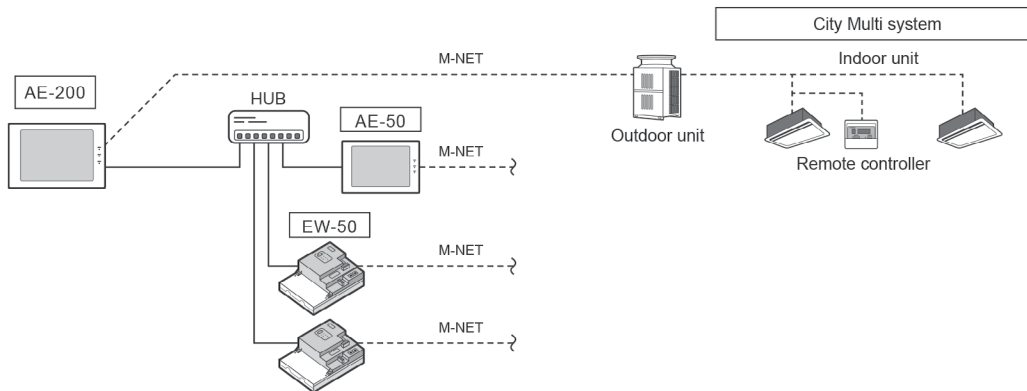


*AE-200A is indicated as AE-200
*AE-50A is indicated as AE-50

CONTROLLING MORE THAN 50 UNITS OF EQUIPMENT (WITH CONNECTION TO AN AE-200 CONTROLLER)

Note

AE-200 is required when using AE-50



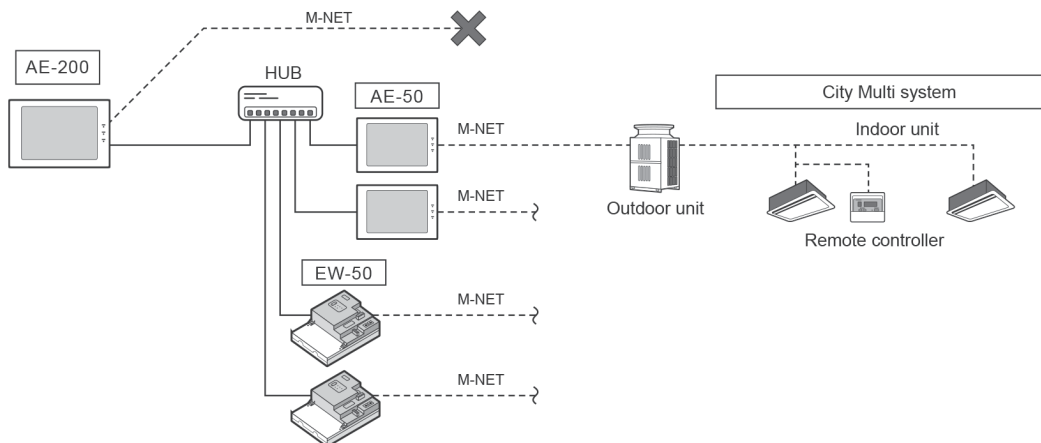
WHEN USING AN APPORTIONED ELECTRICITY BILLING FUNCTION

Notes

AE-200 is required to use a billing function.

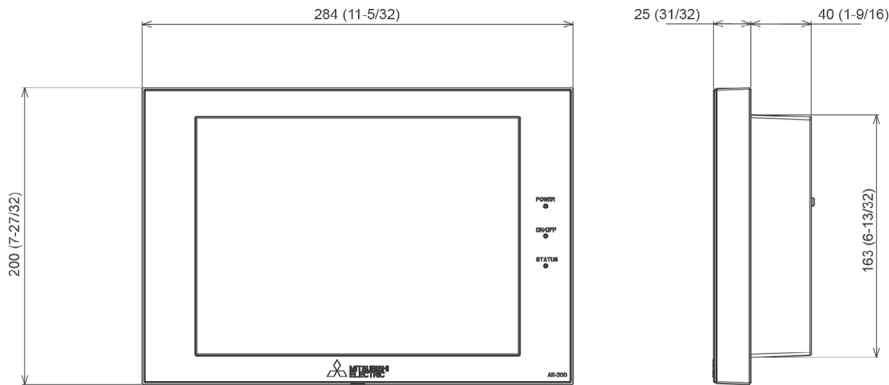
AE-200 M-NET cannot be used when a billing function is used

"Charge" license is required to use a billing function.

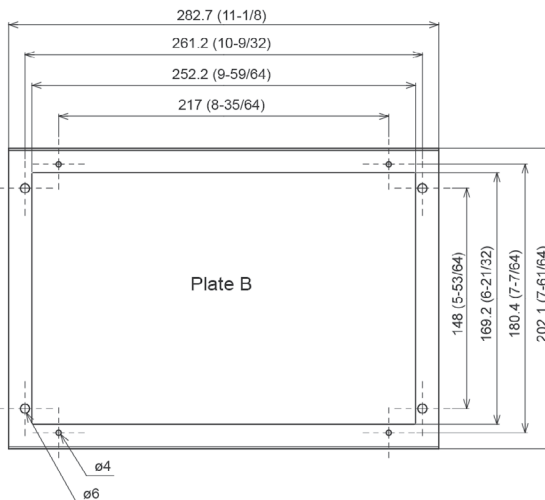
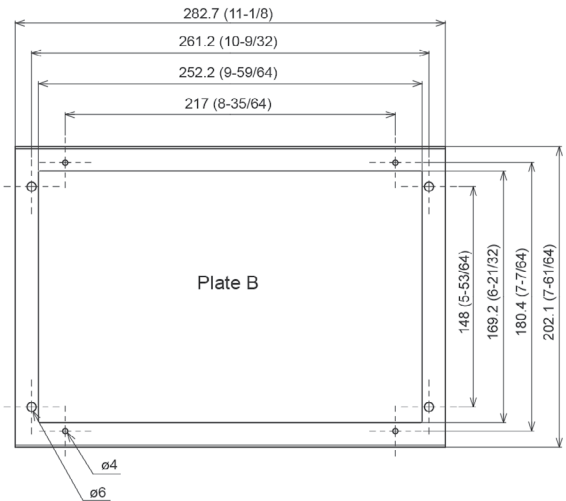
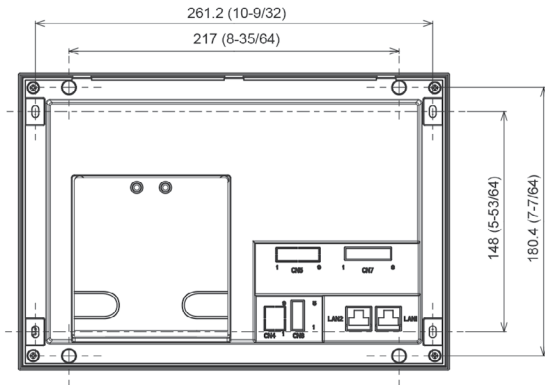
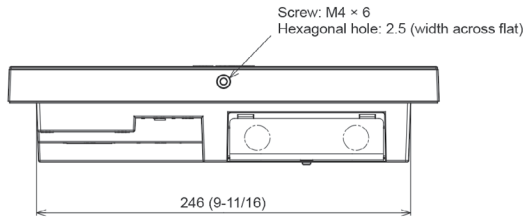


AE-200A - DIMENSIONS

Unit: mm (inch)



*AE-200A is indicated as AE-200
*AE-50A is indicated as AE-50



COOLING & HEATING

1340 Satellite Boulevard, Suwanee, GA 30024
Toll Free: 800-433-4822 www.mehvac.com

