



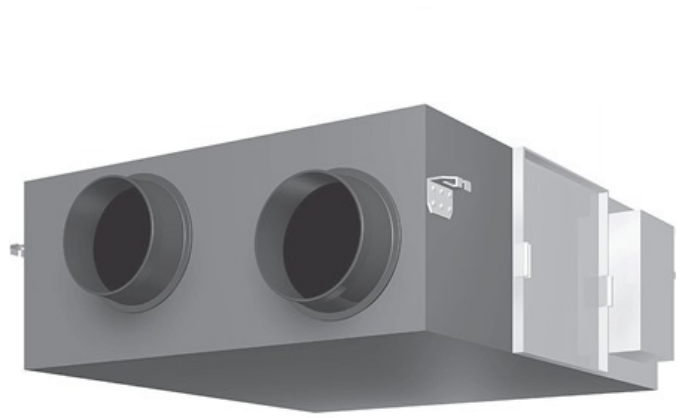
## Submittal Data Sheet

Energy Recovery Ventilator

VAM1200GVJU

### FEATURES

- Superior performance with a high efficiency fan and the capability for use in a wide range of climates (5 to 122°FDB and 80% RH or less)
- Interlocked simultaneous operation with VRV indoor units
- Pre-cooling/heating control function to delay the start of ventilation during air conditioner start-up for higher energy savings
- Unique functions such as independent operation, interlock with other HVAC systems and automatic night purge to reduce cooling loads and increase energy savings
- Standard Limited Warranty: 10-year warranty on compressor and all parts





## Submittal Data Sheet

Energy Recovery Ventilator

VAM1200GVJU

### PERFORMANCE

Indoor Unit Model No.	VAM1200GVJU	Indoor Unit Name:	Energy Recovery Ventilator
Type:	Ducted	Rated Cooling Conditions:	Indoor (°F DB/WB): / Ambient (°F DB/WB): 5 / 122
Rated Cooling Capacity (Btu/hr):		Rated Heating Conditions:	Indoor (°F DB/WB): / Ambient (°F DB/WB): 5 / 122
Sensible Capacity (Btu/hr):		Rated Piping Length(ft):	
Cooling Input Power (kW):	1.720	Rated Height Separation (ft):	
Heating Input Power (kW):	1.72		

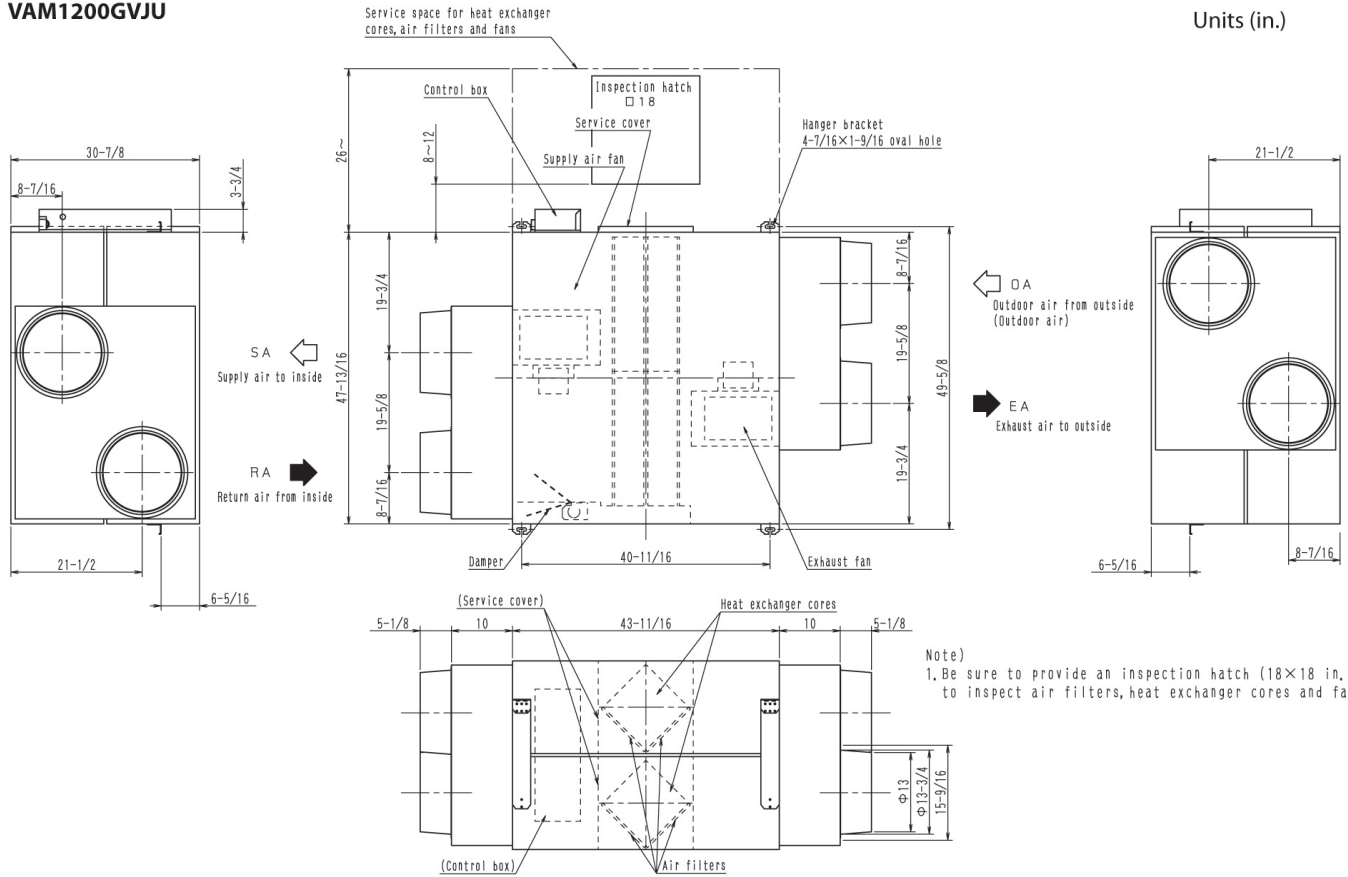
### INDOOR UNIT DETAILS

Power Supply (V/Hz/Ph):	208-230 / 60 / 1	Airflow Rate (H/M/L) (CFM):	1,200/1,200/930
Power Supply Connections:	L1, L2, Ground	Moisture Removal (Gal/hr):	
Min. Circuit Amps MCA (A):	8.10	Gas Pipe Connection (inch):	
Max Overcurrent Protection (MOP) (A):	15.00	Liquid Pipe Connection (inch):	
Dimensions (HxWxD) (in):	30-7/8 x 63-3/4 x 47-13/16	Condensate Connection (inch):	
Panel (HxWxD) (in):		Sound Pressure (H/L) (dBA):	44/42
Net Weight (lb):	346	Sound Power Level (dBA):	38
Panel Weight (lb):		Ext. Static Pressure (Rated/Max) (inWg):	0.56 / 0.56

**Submittal Data Sheet**  
**Energy Recovery Ventilator**  
**VAM1200GVJU**

**DIMENSIONAL DRAWING**

**VAM1200GVJU**



Units (in.)

Note)  
 1. Be sure to provide an inspection hatch (18×18 in.)  
 to inspect air filters, heat exchanger cores and fans.