

Job Name: _____
 System Reference: _____ Date: _____



OUTDOOR VRF HEAT PUMP SYSTEM

UNIT OPTION

- Standard Model.....PUHY-P240YSLMU-A
- Seacoast (BS) Model.....PUHY-P240YSLMU-A-BS

ACCESSORIES

- Twinning Kit (required).....CMY-Y100CBK3
- Joint Kit.....for details see Pipe Accessories Submittal
- Low Ambient Kitfor details see Low Ambient Kit Submittal
- Snow/Hail Guards Kit.....for details see Snow/Hail Guards Kit Submittal
- Base Pan Heater Kit.....for details see Base Pan Heater Kit Submittal

| Specifications | | System | Module 1 | Module 2 |
|---|--------------------------------|----------------------------------|--|--|
| Unit Type | | PUHY-P240YSLMU-A (-BS) | PUHY-P120YLMU-A (-BS) | PUHY-P120YLMU-A (-BS) |
| Nominal Cooling Capacity (460V) | Btu/h | 240,000 | 120,000 | 120,000 |
| Nominal Heating Capacity (460V) | Btu/h | 270,000 | 135,000 | 135,000 |
| Operating Temperature Range *1 | Cooling (Outdoor) *2 | Refer to Module Data | 23~126° F (-5~52° C) DB | |
| | Heating (Outdoor) | | -13~60° F (-25~15.5° C) WB | |
| External Dimensions (H x W x D) | In. (mm) | Refer to Module Data | 64-31/32 x 68-29/32 x 29-5/32 (1,650 x 1,750 x 740) | 64-31/32 x 68-29/32 x 29-5/32 (1,650 x 1,750 x 740) |
| Net Weight | Lbs. (kg) | 1,412 (640) | 706 (320) | 706 (320) |
| External Finish | | Refer to Module Data | Pre-coated galvanized steel sheet | |
| Electrical Power Requirements | Voltage, Phase, Hertz | Refer to Module Data** | 460V, 3-Phase, 60Hz | |
| Minimum Circuit Ampacity (MCA) | A | Refer to Module Data** | 19 | 19 |
| Maximum Overcurrent Protection (MOP) | A | Refer to Module Data** | 30 | 30 |
| <i>Piping Diameter (Brazed)</i> | | | | |
| From Twinning Kit to First Joint or Header (In. / mm) | Liquid (High Pressure) | 5/8 (15.88) | Refer to System Data | |
| | Gas (Low Pressure) | 1-1/8 (28.58) | | |
| Max. Total Refrigerant Line Length | Ft. | 3,280 | Refer to System Data | |
| Max. Refrigerant Line Length (Between ODU & IDU) | Ft. | 541 | | |
| Max. Control Wiring Length | Ft. | 1,640 | | |
| Indoor Unit | Total Capacity | 50~130% of outdoor unit capacity | Refer to System Data | |
| | Model / Quantity | P06~P96/2~50 | Refer to System Data | |
| Sound Pressure Level | dB(A) | 63.0 | Refer to System Data | |
| Fan | | | | |
| Type x Quantity | | Refer to Module Data | Propeller fan x 2 | Propeller fan x 2 |
| Airflow Rate | CFM | | 11,300 | 11,300 |
| External Static Pressure | In. WG | Refer to Module Data | Selectable; 0, 0.12 or 0.24"WG; factory set to 0"W.G. | |
| Compressor Operating Range | | 7% to 100% | Refer to System Data | |
| Compressor Type x Quantity | | Refer to Module Data | Inverter-driven Scroll Hermetic x 1 | Inverter-driven Scroll Hermetic x 1 |
| Refrigerant | | Refer to Module Data | R410A; 26 lbs. + 1 oz. (11.8 kg) | R410A; 26 lbs. + 1 oz. (11.8 kg) |
| Protection Devices | High Pressure | Refer to Module Data | High pressure sensor, High pressure switch at 4.15 MPa (601 psi) | High pressure sensor, High pressure switch at 4.15 MPa (601 psi) |
| | Inverter Circuit (Comp. / Fan) | | Over-current protection | Over-current protection |
| AHRI Ratings (Ducted/Non-Ducted) | EER | 12.1 / 13.1 | Refer to System Data | |
| | IEER | 20.8 / 23.5 | | |
| | COP | 3.52 / 3.67 | | |

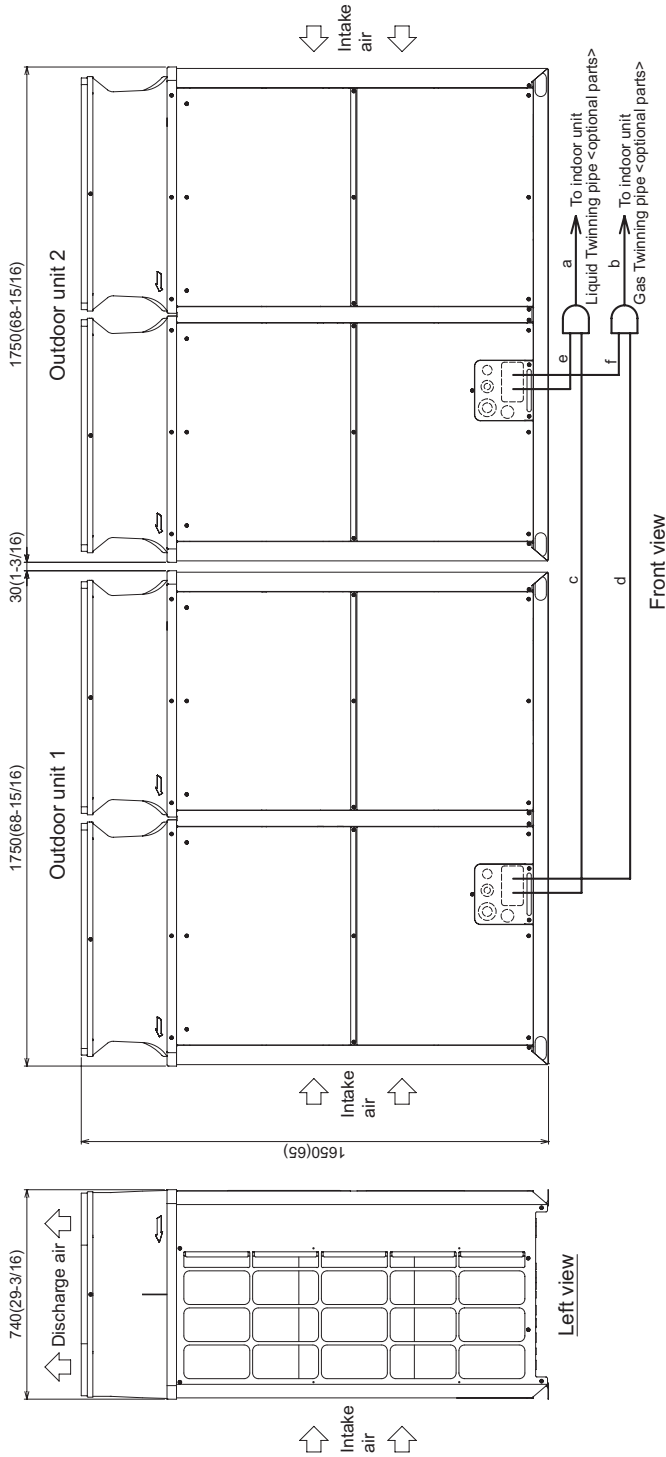
NOTES:

*1. When applying product below -4° F, consult your design engineer for cold climate application best practices, including the use of a backup source for heating.
 *2. For details on extended cooling operation range down to -10° F DB, see Low Ambient Kit Submittal.

** Each individual module requires a separate electrical connection. Refer to electrical data for each individual module.

Outdoor Unit: PUHY-P240YSLMU-A (-BS) – DIMENSIONS

Unit : mm (in.)



Twinning pipe connection size

| Package unit name | PUHY-P240YSLMU-A(-BS) |
|--------------------------------------|-----------------------|
| Outdoor unit 1 | PUHY-P120YLMU-A(-BS) |
| Outdoor unit 2 | PUHY-P120YLMU-A(-BS) |
| Outdoor Twinning Kit(optional parts) | CMY-Y100CEK3 |
| Indoor unit-Twinning pipe | |
| Liquid a | ø15.88(G/6) |
| Gas b | ø28.58(1-1/8) |

| Unit model | Liquid c or e | Gas d or f |
|------------|---------------|---------------|
| P120 | ø12.7(1/2) | ø28.58(1-1/8) |

Note 1. Connect the pipes as shown in the figure above. Refer to the table above for the pipe size.

Note 2. Twinning pipes should not be tilted more than 15 degrees from the horizontal plane.

Note 3. Be sure to see the Installation Manual for details of twinning pipe installation.

Note 4. The pipe section before the twinning pipe (sections "a" and "b" in the figure) must have at least 500mm(19-11/16) of straight section (*including the straight pipe that is supplied with the Twinning pipe).

Note 5. Only use the Twinning pipe by Mitsubishi (optional parts).

NOTES:

SEACOAST PROTECTION

- Anti-corrosion Protection: A coating treatment is applied to condenser coil for protection from air contaminants.
- Standard: Salt Spray Test Method - no unusual rust development to 480 hours.
- Sea Coast (BS): Salt Spray Test Method (JRA 9002) - no unusual rust development to 960 hours.

Modules 1 & 2: PUHY-P120YLMU-A (-BS) – DIMENSIONS

Unit : mm (in.)

Note1. Please refer to the engineering manual for information regarding necessary spacing around the unit and foundation work. Outdoor unit must be mounted at least 12" off the ground or 12" above the highest average snow depth, whichever is greater.
 2. At brazing of pipes, wrap the refrigerant service valve with wet cloth and keep the temperature of refrigerant service valve under 120°C(248 °F).

Connecting pipe specifications

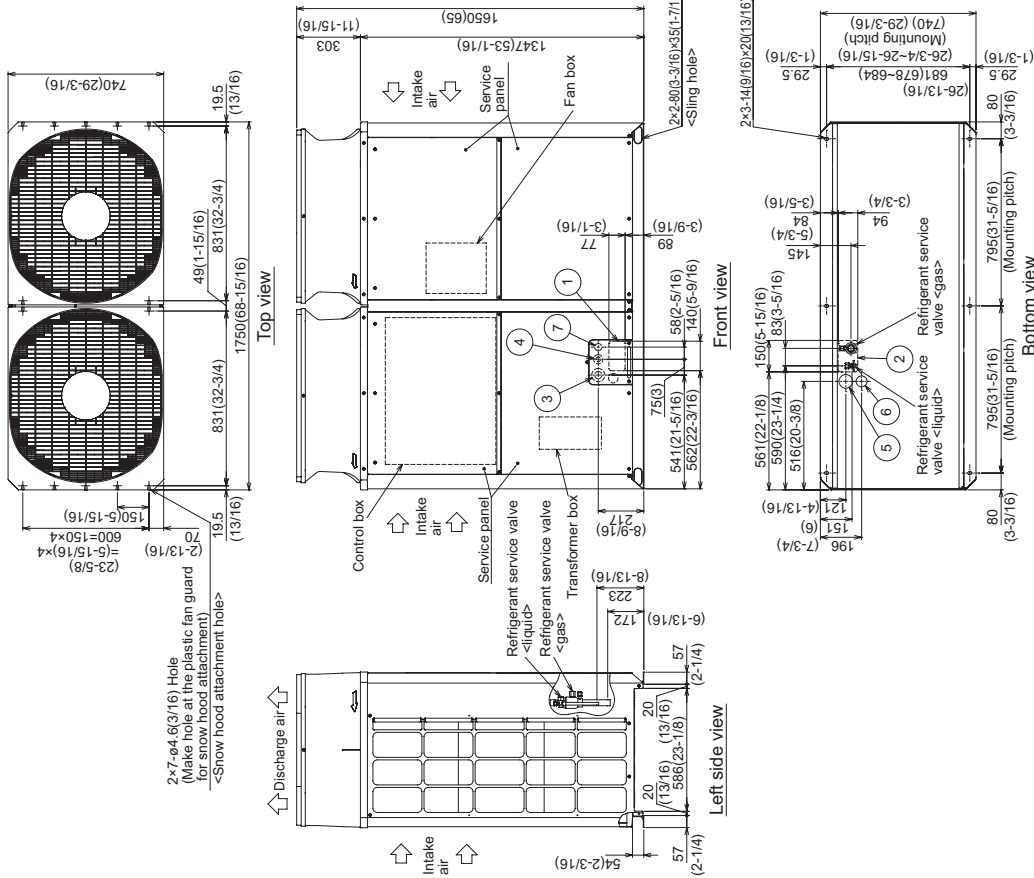
| Model | Refrigerant pipe | | Diameter | |
|---------------|--|--------------------------|----------------|-------------------|
| | Liquid | Gas | Liquid | Gas |
| PUHY-P120YLMU | ø9.52 Braze (3/8)2 (ø12.7 Braze) (1/2)1*3*4 | ø26.58 Braze (1-1/8)1 | ø12.7 (1/2) | ø28.58 (1-1/8) |
| PUHY-P144YLMU | ø12.7 Braze (1/2)1 | | | |
| PUHY-P168YLMU | ø15.88 Braze (5/8)2 | | | |

*1 Expand the on-site piping and connect to the refrigerant service valve piping.
 *2 Use the pipe joint(field supply) and connect to the refrigerant service valve piping.

*3 Indicates dimensions and connection specifications in the case the unit is used in combination with other outdoor units.

*4 Furthest piping length (OU from LU) ≥ 40m(131ft)

| NO | Usage | Specifications |
|----|-------------------------|---|
| ① | For pipes | Front through hole 140 x 77 Knockout hole (5-9/16) (3-1/16) |
| ② | | Bottom through hole 150 x 94 Knockout hole (5-15/16) (3-3/4) |
| ③ | For wires | Front through hole ø62.7 or ø34.5 Knockout hole (2-1/2) (1-3/8) |
| ④ | | Front through hole ø43.7 or ø22.2 Knockout hole (1-3/4) (7/8) |
| ⑤ | | Bottom through hole ø65 Knockout hole (2-9/16) |
| ⑥ | | Bottom through hole ø52 Knockout hole (2-1/16) |
| ⑦ | For transmission cables | Front through hole ø34 Knockout hole (1-3/8) |



NOTES:

SEACOAST PROTECTION

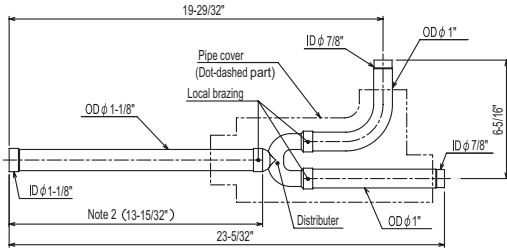
- Anti-corrosion Protection: A coating treatment is applied to condenser coil for protection from air contaminants.
- Standard: Salt Spray Test Method - no unusual rust development to 480 hours.
- Sea Coast (BS): Salt Spray Test Method (JRA 9002) - no unusual rust development to 960 hours.

Twinning Kit: CMY-Y100CBK3

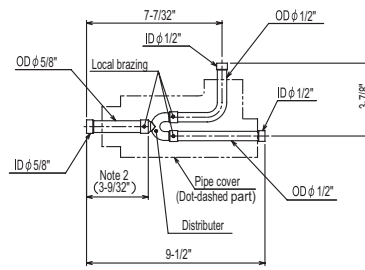
CMY-Y100CBK3

Ref.: CMY_Y100VBK2_EXD_EUDB_SI
in.

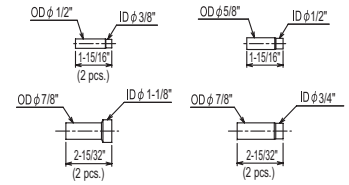
For Gas pipe:



For Liquid pipe:

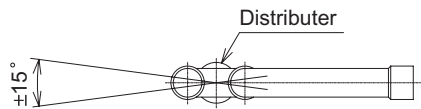


<Reducer(Accessory)>



ID: Inner Diameter OD: Outer Diameter

Note 1. Reference the attitude angle of the branch pipe below the fig.



The angle of the branch pipe for high pressure is within $\pm 15^\circ$ against the horizontal plane.

2. Use the attached pipe to braze the port-opening of the distributor.
3. Pipe diameter is indicated by inside diameter.
4. Only use the Twinning pipe by Mitsubishi (optional parts).



COOLING & HEATING

1340 Satellite Boulevard, Suwanee, GA 30024
Toll Free: 800-433-4822 www.mehvac.com

