

Job Name:	Date:
System Reference:	



OUTDOOR VRF HEAT PUMP WITH HEAT RECOVERY SYSTEM

UNIT OPTION

- Standard Model.....PURY-P72YLMU-A
- Seacoast (BS) Model.....PURY-P72YLMU-A-BS

ACCESSORIES

- Joint Kit.....for details see Pipe Accessories Submittal
- BC Controller (required).....for details see BC Controller Submittals
- Low Ambient Kitfor details see Low Ambient Kit Submittal
- Snow/Hail Guards Kit.....for details see Snow/Hail Guards Kit Submittal
- Base Pan Heater Kit.....for details see Base Pan Heater Kit Submittal

Specifications		Model Name
Unit Type		PURY-P72YLMU-A (-BS)
Nominal Cooling Capacity (460V)	Btu/h	72,000
Nominal Heating Capacity (460V)	Btu/h	80,000
Operating Temperature Range *1	Cooling (Outdoor) *2	23~126° F (-5~52° C) DB
	Heating (Outdoor)	-13~60° F (-25~15.5° C) WB
External Dimensions (H x W x D)	In. (mm)	64-31/32 x 36-1/4 x 29-5/32 (1,650 x 920 x 740)
Net Weight	Lbs. (kg)	474 (215)
External Finish		Pre-coated galvanized steel sheet
Electrical Power Requirements	Voltage, Phase, Hertz	460V, 3-Phase, 60Hz
Minimum Circuit Ampacity (MCA)	A	11
Maximum Overcurrent Protection (MOP)	A	20
Piping Diameter (Brazed) (In. / mm)	Liquid (High Pressure)	5/8 (15.88)
	Gas (Low Pressure)	3/4 (19.05)
Max. Total Refrigerant Line Length	Ft.	1,804
Max. Refrigerant Line Length (Between ODU & IDU)	Ft.	541
Max. Control Wiring Length	Ft.	1,640
Indoor Unit	Total Capacity	50~150% of outdoor unit capacity
	Model / Quantity	P06~P96/1~18
Sound Pressure Levels	dB(A)	58
<i>Fan</i>		
Type x Quantity		Propeller fan x 1
Airflow Rate	CFM	6,550
External Static Pressure	In. WG (Pa)	Selectable; 0, 0.12 or 0.24"WG; factory set to 0"W.G.
Compressor Operating Range		13% to 100%
Compressor Type x Quantity		Inverter scroll hermetic compressor
Refrigerant		R410A; 13 lbs. + 3 oz. (6.0 kg)
Protection Devices	High Pressure	High pressure sensor, High pressure switch at 4.15 MPa (601 psi)
	Inverter Circuit (Comp. / Fan)	Over-current protection
	Fan Motor	Thermal switch
AHRI Ratings (Ducted/Non-Ducted)	EER	13.5 / 14.8
	IEER	23.1 / 28.1
	COP	3.65 / 4.30
	SCHE	25.9 / 28.4

NOTES:

- *1. When applying product below -4° F, consult your design engineer for cold climate application best practices, including the use of a backup source for heating.
- *2. For details on extended cooling operation range down to -10° F DB, see Low Ambient Kit Submittal.

Model: PURY-P72YLMU-A (-BS) – DIMENSIONS

Unit: mm (in.)

- <Accessories>
 • Connecting pipe
 <Low pressure>
 • Pipe (IDø28.58(1-1/8)×ODø22.2(7/8)) ... 1pc.
 • Pipe (IDø22.2(7/8)×ODø19.05(3/4)) ... 1pc.
 • Elbow (IDø28.58(1-1/8)×ODø28.58(1-1/8)) ... 1pc.
 <High pressure>
 • Pipe (IDø25.4(1)×IDø15.38(5/8)) ... 1pc.
 • Pipe (IDø25.4(1)×ODø15.88(5/8)) ... 1pc.

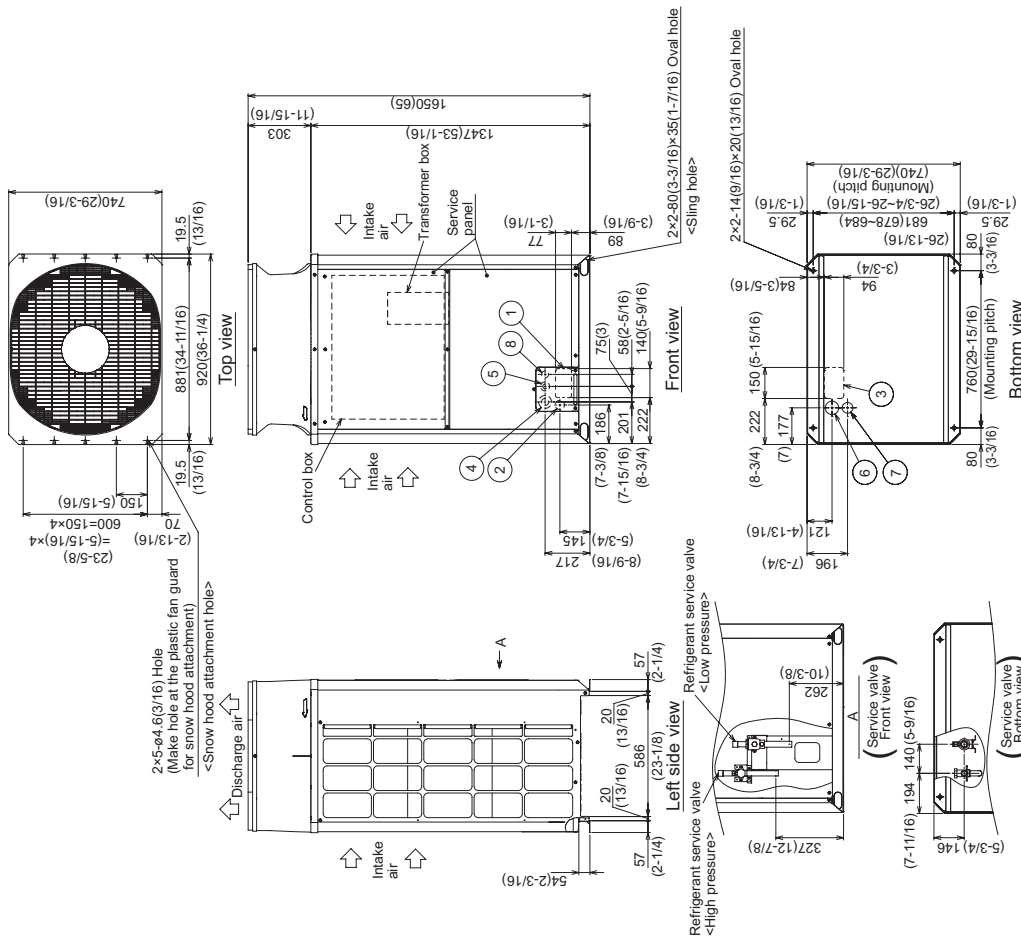
Note 1. Please refer to the engineering manual for information regarding necessary spacing around the unit and foundation work. Outdoor unit must be mounted at least 12" off the ground or 12" above the highest average snow depth, whichever is greater.
 2. At brazing of pipes wrap the refrigerant service valve with wet cloth and keep the temperature of refrigerant service valve under 120°C(248 °F).

Connecting pipe specifications

Model	Refrigerant pipe		Service valve	
	High pressure	Low pressure	High pressure	Low pressure
PURY-P72YLMU	ø15.88 Braze (5/8) - 1	ø19.05 Braze (3/4) - 1	ø25.4 (1)	ø28.58 (1-1/8)

*1 Use the included connecting pipe and connect to the refrigerant service valve piping.

NO.	Usage	Specifications
①	Front through hole	140 × 77 Knockout hole (5-9/16) (3-1/16)
②	Front through hole (Uses when twinning parts is mounted.)	ø45 Knockout hole (1-1/3/16)
③	Bottom through hole	150 × 94 Knockout hole (5-15/16) (3-3/4)
④	Front through hole	ø62.7 or ø34.5 Knockout hole (2-1/2) (1-3/8)
⑤	Front through hole	ø43.7 or ø22.2 Knockout hole (1-3/4) (7/8)
⑥	Bottom through hole	ø65 Knockout hole (2-9/16)
⑦	Bottom through hole	ø52 Knockout hole (2-1/16)
⑧	Front through hole	ø34 Knockout hole (1-3/8)



NOTES: SEACOAST PROTECTION

- Anti-corrosion Protection: A coating treatment is applied to condenser coil for protection from air contaminants.
- Standard: Salt Spray Test Method - no unusual rust development to 480 hours.
- Sea Coast (BS): Salt Spray Test Method (JRA 9002) - no unusual rust development to 960 hours.



COOLING & HEATING

1340 Satellite Boulevard, Suwanee, GA 30024
 Toll Free: 800-433-4822 www.mehvac.com

