

Job Name: _____
 System Reference: _____ Date: _____



OUTDOOR VRF HEAT PUMP WITH HEAT RECOVERY SYSTEM

UNIT OPTION

- Standard Model.....PURY-P240YSLMU-A
- Seacoast (BS) Model.....PURY-P240YSLMU-A-BS

ACCESSORIES

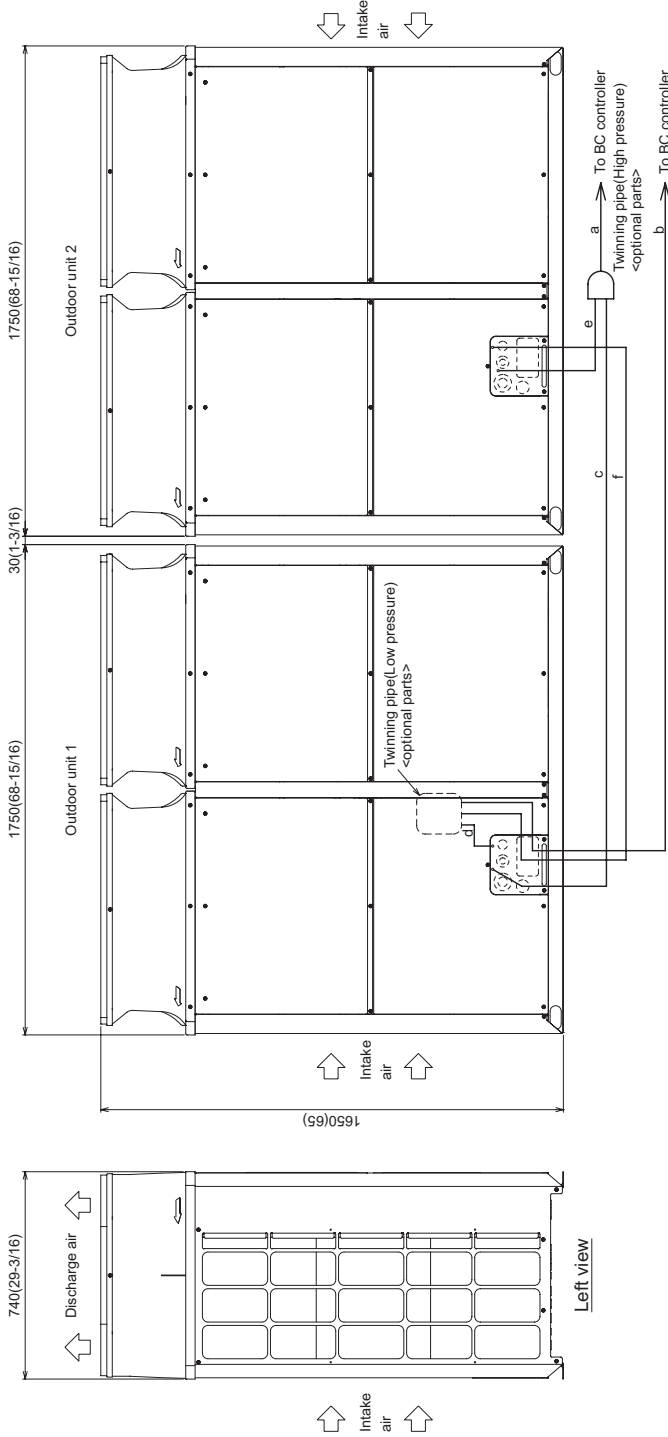
- Twinning Kit (required).....CMY-ER200CBK
- Joint Kit.....for details see Pipe Accessories Submittal
- BC Controller (required).....for details see BC Controller Submittals
- Low Ambient Kitfor details see Low Ambient Kit Submittal
- Snow/Hail Guards Kit.....for details see Snow/Hail Guards Kit Submittal
- Base Pan Heater Kit.....for details see Base Pan Heater Kit Submittal

Specifications		System	Module 1	Module 2
Unit Type		PURY-P240YSLMU-A (-BS)	PURY-P120YLMU-A (-BS)	PURY-P120YLMU-A (-BS)
Nominal Cooling Capacity (460V)	Btu/h	240,000	120,000	120,000
Nominal Heating Capacity (460V)	Btu/h	270,000	135,000	135,000
Operating Temperature Range *1	Cooling (Outdoor) *2	Refer to Module Data	23~126° F (-5~52° C) DB	
	Heating (Outdoor)		-13~60° F (-25~15.5° C) WB	
External Dimensions (H x W x D)	In. (mm)	Refer to Module Data	64-31/32 x 68-29/32 x 29-5/32 (1,650 x 1,750 x 740)	64-31/32 x 68-29/32 x 29-5/32 (1,650 x 1,750 x 740)
Net Weight	Lbs. (kg)	1,460 (662)	730 (331)	730 (331)
External Finish		Refer to Module Data	Pre-coated galvanized steel sheet	
Electrical Power Requirements	Voltage, Phase, Hertz	Refer to Module Data**	460V, 3-Phase, 60Hz	
Minimum Circuit Ampacity (MCA)	A	Refer to Module Data**	19	19
Maximum Overcurrent Protection (MOP)	A	Refer to Module Data**	30	30
Piping Diameter (Braze)				
From From Twinning Kit to BC Controller (In. / mm)	Liquid (High Pressure)	1-1/8 (28.58)	Refer to System Data	
	Gas (Low Pressure)	1-3/8 (34.93)		
Max. Total Refrigerant Line Length	Ft.	2,625	Refer to System Data	
Max. Refrigerant Line Length (Between ODU & IDU)	Ft.	541		
Max. Control Wiring Length	Ft.	1,640		
Indoor Unit	Total Capacity	50~150% of ODUs	Refer to System Data	
	Model / Quantity	P06~P96/2~50 (Max. No. Connectable Branches: 48)	Refer to System Data	
Sound Pressure Level	dB(A)	63.0	Refer to System Data	
Fan				
Type x Quantity		Refer to Module Data	Propeller fan x 2	Propeller fan x 2
Airflow Rate	CFM		11,300	11,300
External Static Pressure	In. WG	Refer to Module Data	Selectable; 0, 0.12 or 0.24"WG; factory set to 0"W.G.	
Compressor Operating Range		7% to 100%	Refer to System Data	
Compressor Type x Quantity		Refer to Module Data	Inverter-driven Scroll Hermetic x 1	Inverter-driven Scroll Hermetic x 1
Refrigerant		Refer to Module Data	R410A; 23 lbs. + 2 oz. (10.5 kg)	R410A; 23 lbs. + 2 oz. (10.5 kg)
Protection Devices	High Pressure	Refer to Module Data	High pressure sensor, High pressure switch at 4.15 MPa (601 psi)	High pressure sensor, High pressure switch at 4.15 MPa (601 psi)
	Inverter Circuit (Comp. / Fan)		Over-current protection	Over-current protection
	Fan Motor		Thermal switch	Thermal switch
AHRI Ratings (Ducted/Non-Ducted)	EER	11.8 / 12.9	Refer to System Data	
	IEER	19.0 / 22.3		
	COP	3.45 / 3.64		
	SCHE	22.9 / 26.8		

NOTES:
 *1. When applying product below -4° F, consult your design engineer for cold climate application best practices, including the use of a backup source for heating.
 *2. For details on extended cooling operation range down to -10° F DB, see Low Ambient Kit Submittal.
 ** Each individual module requires a separate electrical connection. Refer to electrical data for each individual module.

Outdoor Unit: PURY-P240YSLMU-A (-BS) – DIMENSIONS

Unit: mm (in.)



Front view

Unit model	P240	P264	P288
Component unit model	P120	P144	P168
Twinning Kit - Outdoor unit High pressure	c ø19.05(3/4)	c ø22.7(7/8)	c ø22.7(7/8)
Twinning Kit - Outdoor unit Low pressure	d - (Note 5)	d - (Note 5)	d - (Note 5)
Unit model	P168	P188	P168
Component unit model	P312	P336	P336
Twinning Kit - Outdoor unit High pressure	c ø22.7(7/8)	c ø22.7(7/8)	c ø22.7(7/8)
Twinning Kit - Outdoor unit Low pressure	d - (Note 5)	d - (Note 5)	d - (Note 5)

Package unit name	PURY-P240YSLMU-A(-BS)	PURY-P247YSLMU-A(-BS)	PURY-P287YSLMU-A(-BS)	PURY-P287YSLMU-A(-BS)	PURY-P337YSLMU-A(-BS)
Component unit name	PURY-P144YSLMU-A(-BS)	PURY-P144YSLMU-A(-BS)	PURY-P188YSLMU-A(-BS)	PURY-P188YSLMU-A(-BS)	PURY-P188YSLMU-A(-BS)
Outdoor twinning kit (optional parts)	PURY-P120YSLMU-A(-BS)	PURY-P144YSLMU-A(-BS)	PURY-P168YSLMU-A(-BS)	PURY-P168YSLMU-A(-BS)	PURY-P168YSLMU-A(-BS)
BC controller - Twinning pipe	ø34.3(1-3/8)	ø28.5(1-1/8)	ø41.2(1-5/8)	ø41.2(1-5/8)	ø41.2(1-5/8)

- Note 1. Connect the pipes as shown in the figure above. Refer to the table above for the pipe size.
 2. Twinning pipe (High pressure) should not be tilted more than 15 degrees from the horizontal plane. Be sure to see the Installation Manual for details of Twinning pipe installation.
 3. The pipe section before the Twinning pipe (section "a" in the figure) must have at least 500mm(19-11/16) of straight section (*including the straight pipe that is supplied with the Twinning pipe).
 4. Only use the Twinning pipe by Mitsubishi (optional parts).
 5. Connect the outdoor unit 1 with the Twinning pipe (Low pressure) (section "d" in the figure).

- NOTES:
SEACOAST PROTECTION
- Anti-corrosion Protection: A coating treatment is applied to condenser coil for protection from air contaminants.
 - Standard: Salt Spray Test Method - no unusual rust development to 480 hours.
 - Sea Coast (BS): Salt Spray Test Method (JRA 9002) - no unusual rust development to 960 hours.

Modules 1 and 2: PURY-P120YLMU-A (-BS) – DIMENSIONS

Unit: mm (in.)

- <Accessories>
 • Connecting pipe
 • Elbow (ID ϕ 28.58(1-1/8) \times OD ϕ 28.58(1-1/8))... P120, P144, P168 1 pc.
 • High pressure
 • Pipe (ID ϕ 25.4(1) \times ID ϕ 19.05(3/4)) ... P120 1 pc.
 • Pipe (ID ϕ 25.4(1) \times OD ϕ 19.05(3/4)) ... P120 1 pc.
 • Pipe (ID ϕ 25.4(1) \times ID ϕ 22.2(7/8)) ... P144, P168 1 pc.
 • Pipe (ID ϕ 25.4(1) \times OD ϕ 22.2(7/8)) ... P144, P168 1 pc.

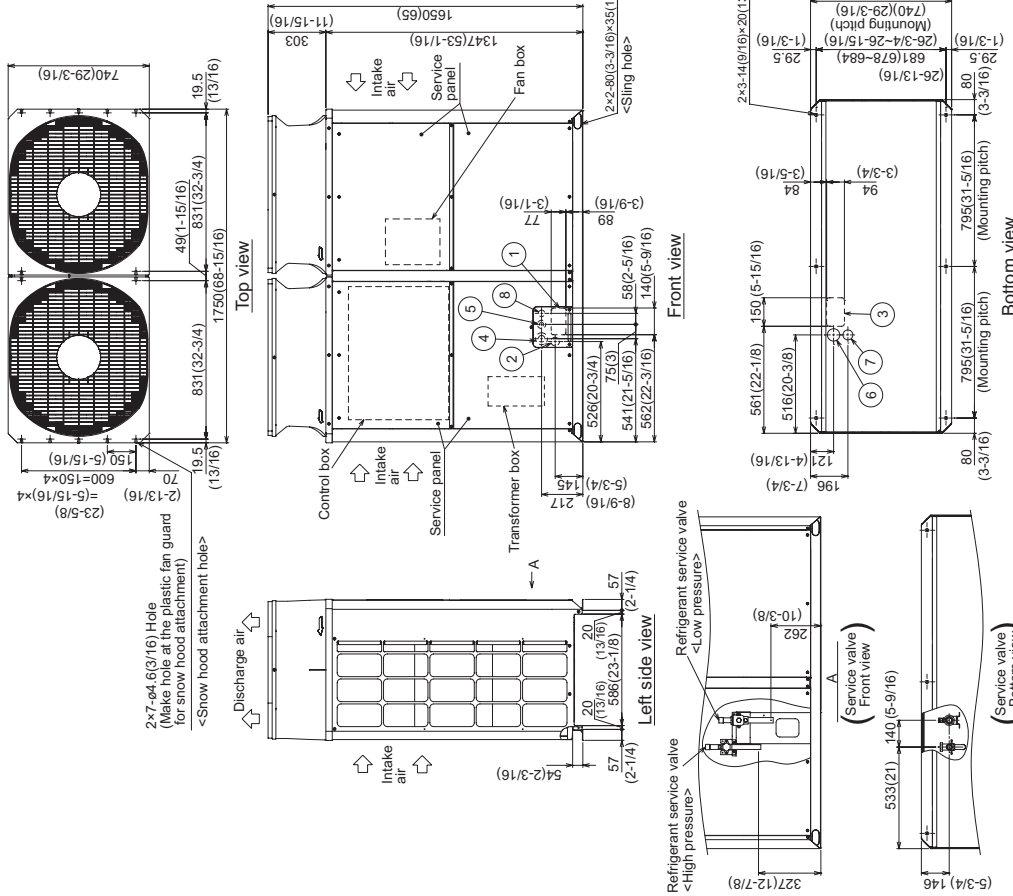
Note1. Please refer to the engineering manual for information regarding necessary spacing around the unit and foundation work. Outdoor unit must be mounted at least 12" off the ground or 12" above the highest average snow depth, whichever is greater.
 2. At brazing of pipes, wrap the refrigerant service valve with wet cloth and keep the temperature of refrigerant service valve under 120°C(248°F).

Connecting pipe specifications

Model	Refrigerant pipe		Service valve	
	High pressure	Low pressure	High pressure	Low pressure
PURY-P120YLMU	ϕ 19.05 Brazed (3/4)" \times 1	ϕ 28.58 Brazed (1-1/8)" \times 1	ϕ 25.4 (1)	ϕ 28.58 (1-1/8)
PURY-P144YLMU	ϕ 22.2 Brazed (7/8)" \times 1	ϕ 28.58 Brazed (1-1/8)" \times 1	ϕ 25.4 (1)	ϕ 28.58 (1-1/8)
PURY-P168YLMU	ϕ 22.2 Brazed (7/8)" \times 1	ϕ 28.58 Brazed (1-1/8)" \times 1	ϕ 25.4 (1)	ϕ 28.58 (1-1/8)

*1. Use the included connecting pipe and connect to the refrigerant service valve piping.

NO.	Usage	Specifications
①	Front through hole	140 \times 77 Knockout hole (5-9/16)(3-1/16)
②	Front through hole (Use when wiring kit (optional parts) is mounted.)	ϕ 45 Knockout hole (1-13/16)
③	Bottom through hole	150 \times 94 Knockout hole (5-15/16)(3-3/4)
④	Front through hole	ϕ 62.7 or ϕ 34.5 Knockout hole (2-1/2)(1-3/8)
⑤	Front through hole	ϕ 43.7 or ϕ 22.2 Knockout hole (1-3/4)(7/8)
⑥	Bottom through hole	ϕ 65 Knockout hole (2-9/16)
⑦	Bottom through hole	ϕ 52 Knockout hole (2-1/16)
⑧	Front through hole	ϕ 34 Knockout hole (1-3/8)

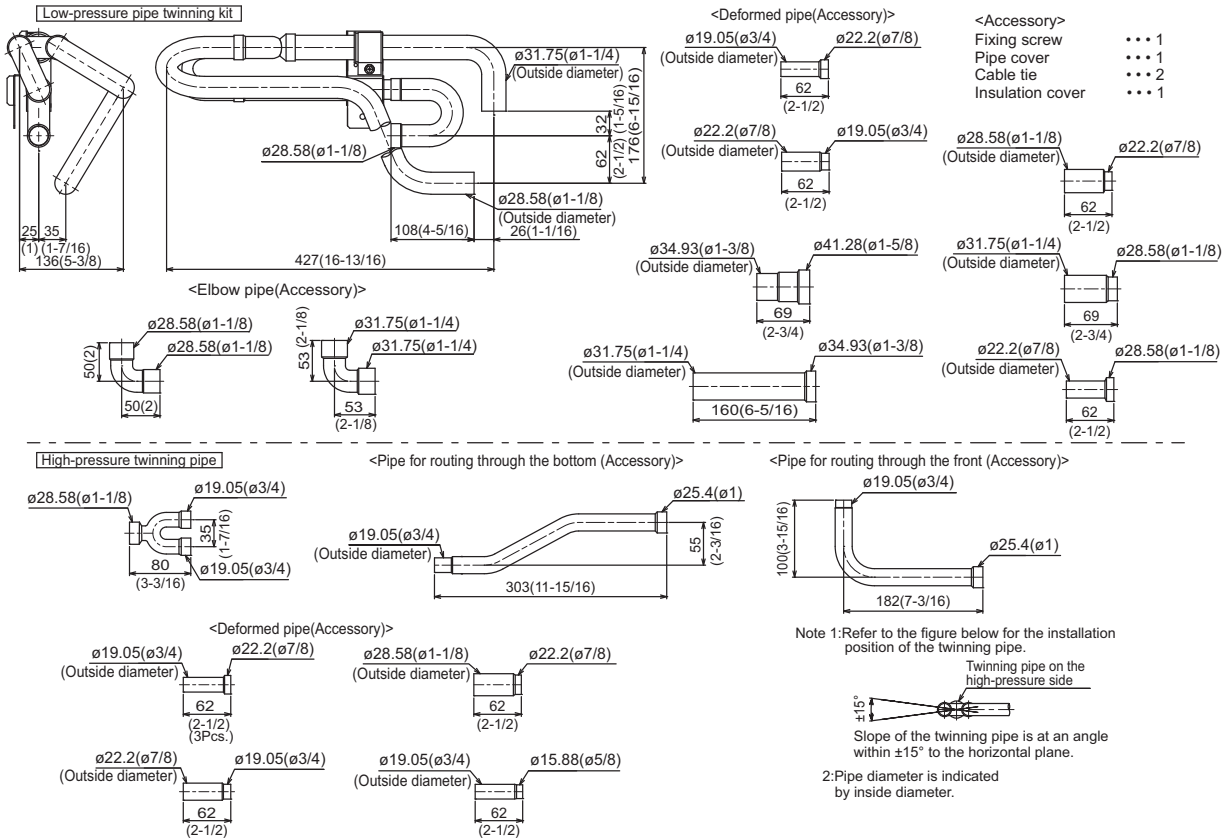


NOTES:
SEACOAST PROTECTION

- Anti-corrosion Protection: A coating treatment is applied to condenser coil for protection from air contaminants.
- Standard: Salt Spray Test Method - no unusual rust development to 480 hours.
- Sea Coast (BS): Salt Spray Test Method (JRA 9002) - no unusual rust development to 960 hours.

Twinning Kit: CMY-ER200CBK

Unit: mm (inch)



COOLING & HEATING
 1340 Satellite Boulevard, Suwanee, GA 30024
 Toll Free: 800-433-4822 www.mehvac.com

