

Job Name:

System Reference:

Date:



GENERAL FEATURES

- Square edge, sleek design
- 3D turbo fan enabling increased airflow
- Built-in 3D i-see Sensor™*
- Improved installation features*
- Occupancy detection*
- Energy saving features*
- Improved occupant comfort
- Four fan speed settings including auto-fan
- Corner pocket design for simplified installation
- Built-in condensate lift mechanism designed to provide up to 33-7/16" of lift
- Ventilation air intake supported

*Requires a PAR-32MAA-J controller

ACCESSORIES

- Air Outlet Shutter Plate (3 pieces) (PAC-SJ37SP-E)
- High Efficiency Filter (PAC-SH59KF-E)
- Multi Function Casement (PAC-SJ41TM-E)
- Wireless Signal Receiver (PAR-SR3LA-E)
- CN24 Relay Kit (CN24RELAY-KIT-CM3)

SPECIFICATIONS

Capacity*		
Cooling	Btu/h	8,000
Heating	Btu/h	9,000

* Cooling / Heating capacity indicated at the maximum value at operation under the following conditions:

Cooling | Indoor: 80° F (26.7° C) DB / 67° F (19° C) WB; Outdoor 95° F (35° C) DB
Heating | Indoor: 70° F (21.1° C) DB; Outdoor 47° F (8.3° C) DB / 43° F (6° C) WB

Electrical

Electrical Power Requirements	1-phase, 208 / 230V, 60Hz	
Minimum Circuit Ampacity (MCA)	A	0.39
Recommended Fuse Size	A	15

External Dimensions (H x W x D)

Unit	In.(mm)	10-3/16 × 33-3/32 × 33-3/32 (258 × 840 × 840)
Grill (PLP-40EAEU)	In.(mm)	1-9/16 × 37-13/32 × 37-13/32 (40 × 950 × 950)

Net Weight

Unit	Lbs (kg)	46 (21)
Grill (PLP-40EAEU)	Lbs (kg)	11 (5)

External Finish

Unit	Galvanized steel sheet
Grill (PLP-40EAEU)	White - MUNSELL (6.4Y 8.9/0.4)

Coil Type

Cross fin

Fan

Type x Quantity	Turbo fan x 1	
Airflow Rate (Low-Mid2-Mid1-High)	CFM	494 - 530 - 565 - 600
Motor Type	DC motor	
Motor Output	kW	0.05
Motor F.L.A.	A	0.31

Air Filter

PP honeycomb
(long life filter, anti-bacterial type)

Refrigerant Piping Diameter

Liquid (High Pressure)	In.(mm)	1/4 (6.35) Flare
Gas (Low Pressure)	In.(mm)	1/2 (12.7) Flare

Field Drain Pipe Size

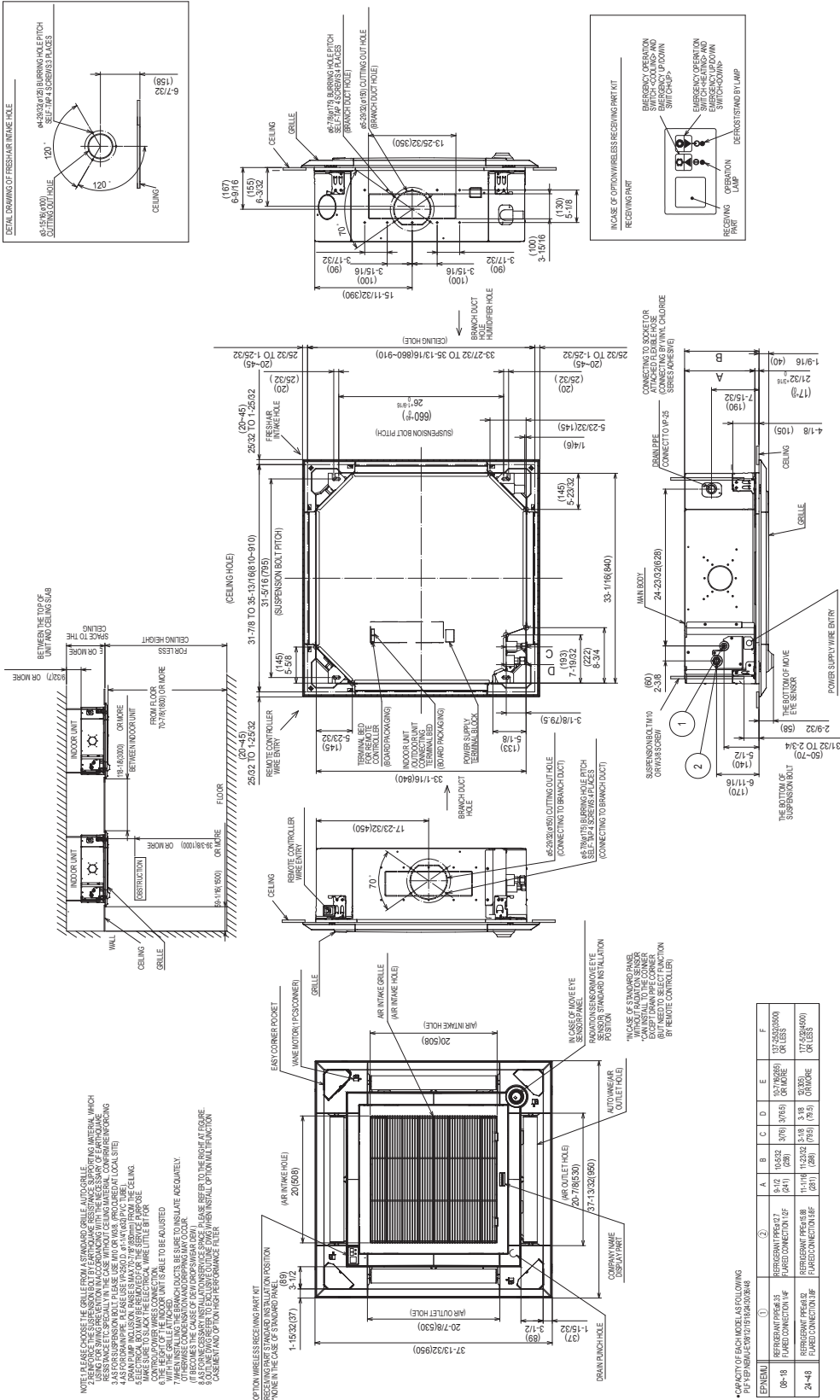
In.(mm) O.D. 1-1/4 (32)

Sound Pressure Level

Low-Mid2-Mid1-High	dB(A)	27 - 29 - 30 - 31
--------------------	-------	-------------------

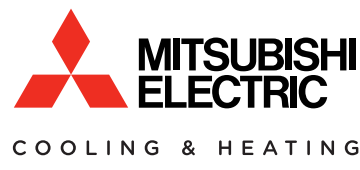
Model: PLFY-EP08NEMU-E – DIMENSIONS

Units: mm (in.)



*CAPACITY OF EACH MODEL AS FOLLOWING
 PLFY-EP08NEMU-E (1) 16.4(0.58) 16.4(0.58) 16.4(0.58)

EPNEMU	(1)	A	B	C	D	E	F
REFRIGERANT PREG-17 FLUOR CONNECTION (IF OR LESS)	4'12"	10'5"02"	3'06"	3'06"	10'7"16(661)	10'7"16(661)	OR MORE
REFRIGERANT PREG-18 FLUOR CONNECTION (IF OR LESS)	4'12"	10'5"02"	3'06"	3'06"	10'7"16(661)	10'7"16(661)	OR MORE
REFRIGERANT PREG-18 FLUOR CONNECTION (IF OR LESS)	4'12"	10'5"02"	3'06"	3'06"	10'7"16(661)	10'7"16(661)	OR MORE
REFRIGERANT PREG-18 FLUOR CONNECTION (IF OR LESS)	4'12"	10'5"02"	3'06"	3'06"	10'7"16(661)	10'7"16(661)	OR MORE



1340 Satellite Boulevard, Suwanee, GA 30024
 Toll Free: 800-433-4822 www.mehvac.com

