

Job Name: _____ Location: _____

Drawing Reference: _____ Schedule No. _____

System No.: _____ Date: _____

GENERAL FEATURES



- R410A refrigerant
- Seven sizes from 6,000 to 30,000 Btu/h
- Powerful airflow (CFM)
- Compact, lightweight, shiny-white, flat-panel design
- Quiet operation
- Multiple fan-speed settings
- Intake grille filter is easily removed for cleaning
- Built-in receiver is standard

SPECIFICATIONS

Capacity*

Cooling.....30,000 Btu/h
 Heating.....34,000 Btu/h

Power

Power Source.....208 / 230V, 1-phase, 60Hz

Power Consumption

Cooling.....0.06 kW
 Heating.....0.06 kW

Current

Cooling.....0.43 A
 Heating.....0.43 A

Minimum Circuit Ampacity (MCA).....0.54 A
 Maximum Overcurrent Protection (MOCP) Fuse.....15 A

External Finish.....Munsell No. 1.0Y 9.2 / 0.2

External Dimensions

Inches.....14-3/8 H x 46-1/16 W x 11-5/8 D
 mm.....365 H x 1,170 W x 295 D

Net Weight

Unit.....46 lbs. / 21 kg

Coil Type.....Cross Fin
 (Aluminum Plate Fin and Copper Tube)

Fan

Type x Quantity.....Line Flow Fan x 1
 Airflow Rate (Low-High).....710 - 850 CFM

Motor

Type.....Direct-drive DC Motor
 Output.....0.056 kW

Air Filter.....Polypropylene Honeycomb

Refrigerant Piping Dimensions

Liquid (High Pressure).....3/8" / 9.52 mm (Flare)
 Gas (Low Pressure).....5/8" / 15.88 mm (Flare)

Drainpipe Dimension.....I.D. 5/8" / 16 mm

Sound Pressure Levels

Low-High.....43 - 49 dB(A)

OPTIONS

- Condensate Pump.....SI1730-230
- External Heat Adapter.....PAC-725AD
- CN24 Relay Kit.....CN24RELAY-KIT-CM

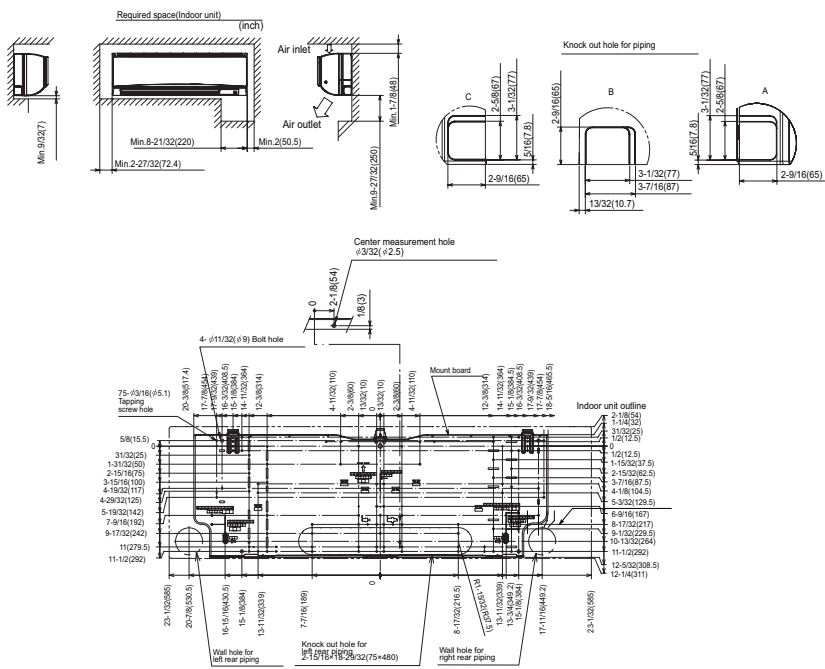
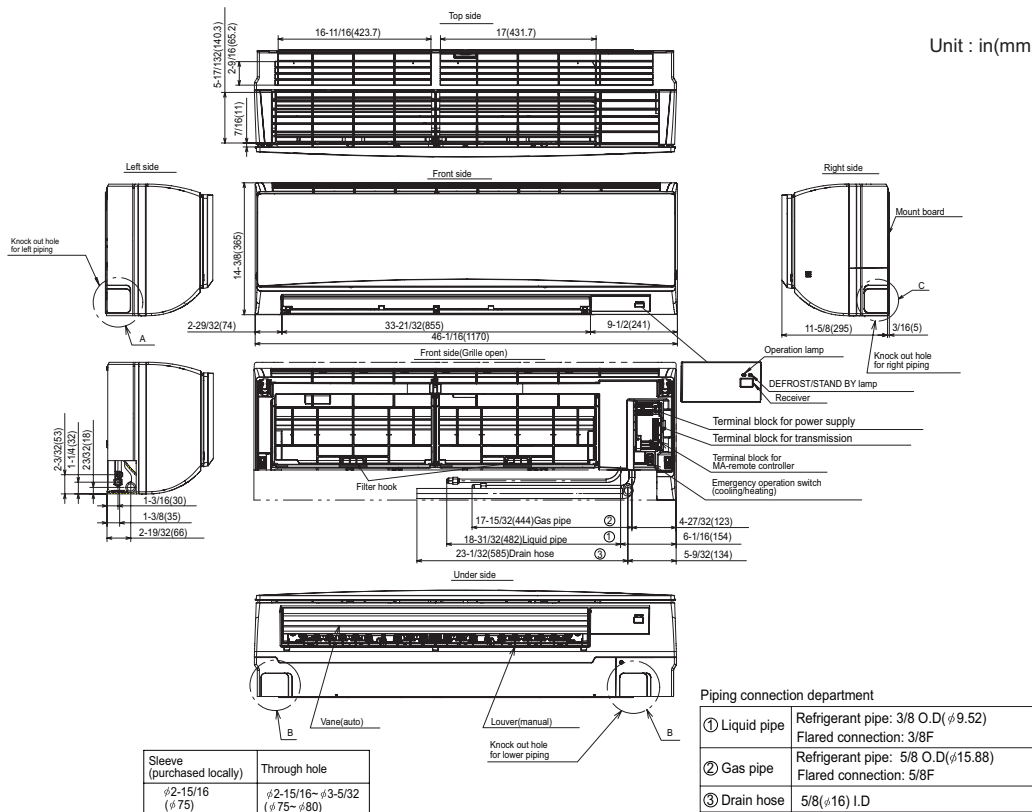
* Cooling / Heating capacity indicated at the maximum value at operation under the following conditions:
 Cooling: Indoor 80°F (27°C) DB / 67°F (19°C) WB, Outdoor 95°F (35°C) DB
 Heating: Indoor 70°F (21°C) DB, Outdoor 47°F (8°C) DB / 43°F (6°C) WB

Note: Ventilation air: Providing sufficient ventilation air is an important part of every building design. ASHRAE Standard 62 provides the minimum ventilation air requirement. Also, check local codes.



Model: PKFY-P30NKMU-E – DIMENSIONS

Unit : in(mm)



Mitsubishi Electric Air Conditioning & Refrigeration Systems Works acquired ISO 9001 certification under Series 9000 of the International Standard Organization (ISO) based on a review of quality warranties for the production of refrigeration and air conditioning equipment.

ISO Authorization System
The ISO 9000 series is a plant authorization system relating to quality warranties as stipulated by the ISO. ISO 9001 certifies quality warranties based on the "design, development, production, installation and auxiliary services" for products built at an authorized plant.



Mitsubishi Electric Air Conditioning & Refrigeration Systems Works acquired environmental management system standard ISO 14001 certification.

The ISO 14000 series is a set of standards applying to environmental protection set by the International Standard Organization (ISO).



HVAC Advanced Products Division
Mitsubishi Electric & Electronics USA, Inc.
3400 Lawrenceville Suwanee Rd.
Suwanee, GA 30024
Tele: 678-376-2900 • Fax: 800-889-9904
Toll Free: 800-433-4822 (#4)
www.mehvac.com
Specifications are subject to change without notice.