

Job Name: \_\_\_\_\_ Location: \_\_\_\_\_

Drawing Reference: \_\_\_\_\_ Schedule No. \_\_\_\_\_

System No.: \_\_\_\_\_ Date: \_\_\_\_\_

### GENERAL FEATURES



- R410A refrigerant
- Seven sizes from 6,000 to 30,000 Btu/h
- Powerful airflow (CFM)
- Compact, lightweight, shiny-white, flat-panel design
- Quiet operation
- Multiple fan-speed settings
- Intake grille filter is easily removed for cleaning
- Built-in receiver is standard

### SPECIFICATIONS

#### Capacity\*

Cooling.....6,000 Btu/h  
 Heating.....6,700 Btu/h

#### Power

Power Source.....208 / 230V, 1-phase, 60Hz

#### Power Consumption

Cooling.....0.03 kW  
 Heating.....0.03 kW

#### Current

Cooling.....0.15 A  
 Heating.....0.15 A

Minimum Circuit Ampacity (MCA).....0.19 A  
 Maximum Overcurrent Protection (MOCP) Fuse.....15 A

External Finish.....Munsell No. 1.0Y 9.2 / 0.2

#### External Dimensions

Inches.....11-5/8 H x 32-1/8 W x 8-7/8 D  
 mm.....295 H x 815 W x 225 D

#### Net Weight

Unit.....22 lbs. / 10 kg

Coil Type.....Cross Fin  
 (Aluminum Plate Fin and Copper Tube)

#### Fan

Type x Quantity.....Line Flow Fan x 1  
 Airflow Rate (Low-Mid1-Mid2-High)...170 - 180 - 200 - 210 CFM

#### Motor

Type.....One-phase Induction Motor  
 Output.....0.008 kW

Air Filter.....Polypropylene Honeycomb

#### Refrigerant Piping Dimensions

Liquid (High Pressure).....1/4" / 6.35 mm (Flare)  
 Gas (Low Pressure).....1/2" / 12.7 mm (Flare)

Drainpipe Dimension.....I.D. 5/8" / 16 mm

#### Sound Pressure Levels

Low-Mid1-Mid2-High.....32 - 33 - 35 - 36 dB(A)

### OPTIONS

- Condensate Pump.....SI1730-230
- External Heat Adapter.....PAC-SA88HA-E
- CN24 Relay Kit.....CN24RELAY-KIT-CM

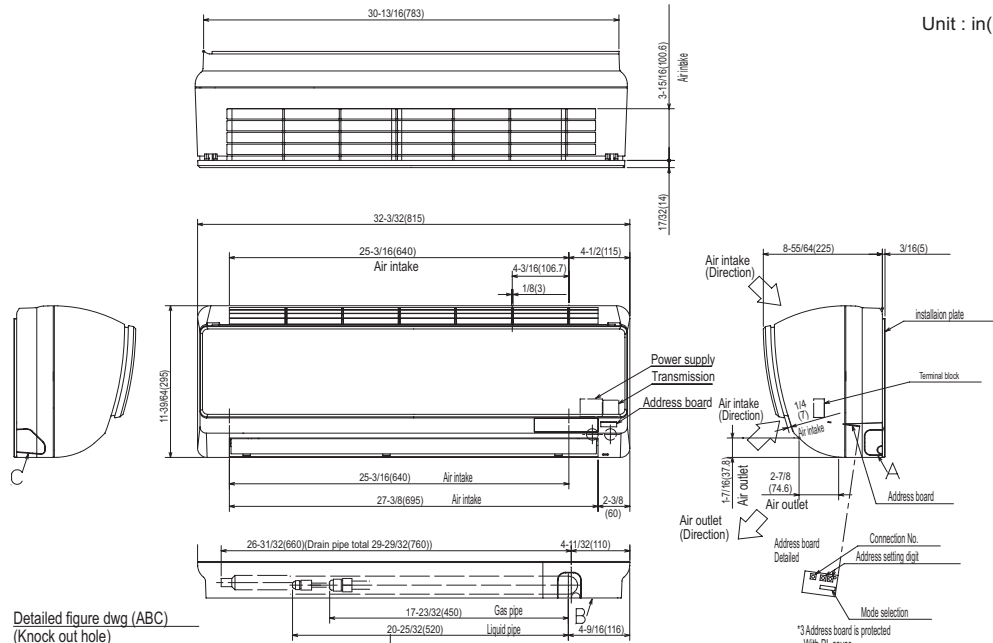
\* Cooling / Heating capacity indicated at the maximum value at operation under the following conditions:  
 Cooling: Indoor 80°F (27°C) DB / 67°F (19°C) WB, Outdoor 95°F (35°C) DB  
 Heating: Indoor 70°F (21°C) DB, Outdoor 47°F (8°C) DB / 43°F (6°C) WB

**Note:** Ventilation air: Providing sufficient ventilation air is an important part of every building design. ASHRAE Standard 62 provides the minimum ventilation air requirement. Also, check local codes.

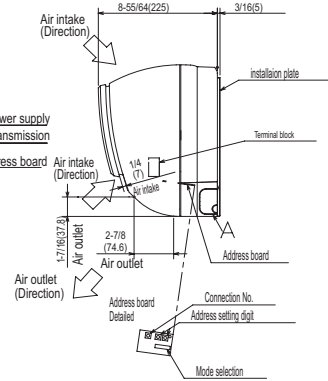
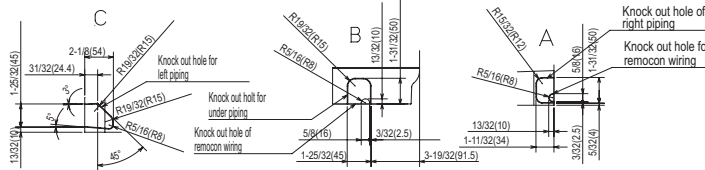


# Model: PKFY-P06NBMU-E – DIMENSIONS

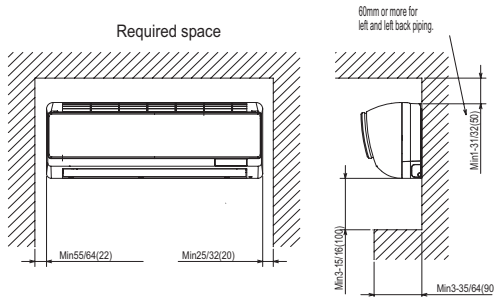
Unit : in(mm)



Detailed figure dwg (ABC)  
(Knock out hole)



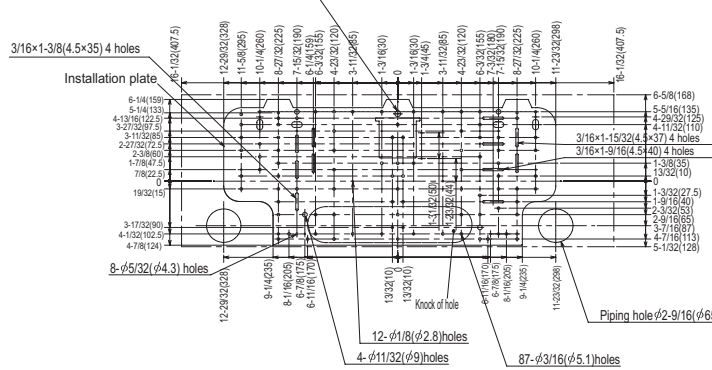
\*3 Address board is protected with PL cover. Remove the screw with driver on the occasion of setting.



Note 1 Use M10 or W3/8 screw for installation plate.  
Note 2 Extension piping side.  
Note 3 In case of connecting MA-remote controller please MA-remote controller cable in accessories to the connector.

Refrigerant piping	Liquid pipe	1/4F (φ 6.35)
	Gas pipe	1/2F (φ 12.7)
	Drain pipe	φ 5/8 (φ 16) I.D

Installation plate balance point hole Details of installation plate



Mitsubishi Electric Air Conditioning & Refrigeration Systems Works acquired ISO 9001 certification under Series 9000 of the International Standard Organization (ISO) based on a review of quality warranties for the production of refrigeration and air conditioning equipment.

ISO Authorization System  
The ISO 9000 series is a plant authorization system relating to quality warranties as stipulated by the ISO. ISO 9001 certifies quality warranties based on the "design, development, production, installation and auxiliary services" for products built at an authorized plant.



**HVAC Advanced Products Division**  
Mitsubishi Electric & Electronics USA, Inc.  
3400 Lawrenceville Suwanee Rd.  
Suwanee, GA 30024  
Tele: 678-376-2900 • Fax: 800-889-9904  
Toll Free: 800-433-4822 (#4)  
www.mehvac.com  
Specifications are subject to change without notice.



Mitsubishi Electric Air Conditioning & Refrigeration Systems Works acquired environmental management system standard ISO 14001 certification.

The ISO 14000 series is a set of standards applying to environmental protection set by the International Standard Organization (ISO).

Certificate Number EC97J1227

C SD - PKFY-P06NBMU-E - 1 - 200907