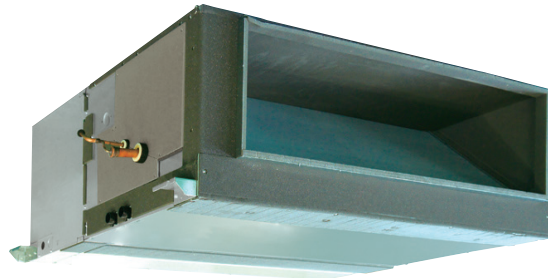


Job Name:

Schedule Reference:

Date:



GENERAL FEATURES

- Dual set point functionality
- High external static pressure capabilities
- Ducted fan coil supports multiple configurations for flexible installation

OPTIONS

- Drain pump.....PAC-KE04DM-F
- Condensate Pump.....BlueDiamond X87-711/721; 115/230V
- Condensate Pump.....Sauermann SI30-115/230; 115/230V
- Filter Box (Includes 2" MERV 13 filter).....FBH2-3
- CN24 Relay Kit.....CN24RELAY-KIT-CM3

SPECIFICATIONS

Capacity*
 Cooling 54,000 Btu/h
 Heating 60,000 Btu/h

Power
 Power Source 208-230V, 1 phase, 60Hz

Power Consumption
 Cooling 0.695 / 0.767 kW
 Heating (208/230V) 0.695 / 0.767 kW

Current
 Cooling (208/230V) 3.43 / 3.78 A
 Heating (208/230V) 3.43 / 3.78 A
 Minimum Circuit Ampacity (MCA) (208/230V) . 4.29 / 4.73 A
 Maximum Overcurrent Protection (MOCP) 15A

External Finish Galvanized steel plate

Dimensions
 Inches 14-31/32 h x 47-1/4 w x 35-7/16 d
 mm 380 h x 1200 w x 900 d

Net Weight 155 lb / 70 kg

Coil Type Cross fin
 (aluminum plate fin and copper tube)

Fan
 Type x Quantity Sirocco fan x 2
 Airflow Rate 989 - 1412 CFM

External Static Pressure
 @ 208V 0.20 (default) - 0.64 in. WG
 @ 230V 0.40-0.60 (default) - 0.80 in. WG
Motor Type Single phase induction motor

Air Filter Filter must be procured locally

Refrigerant Pipe Dimensions
 R410A
 Liquid 3/8" / 9.52 mm flare
 Gas 5/8" / 15.88 mm flare

Drainpipe Dimension O.D.1-1/4" / 32 mm

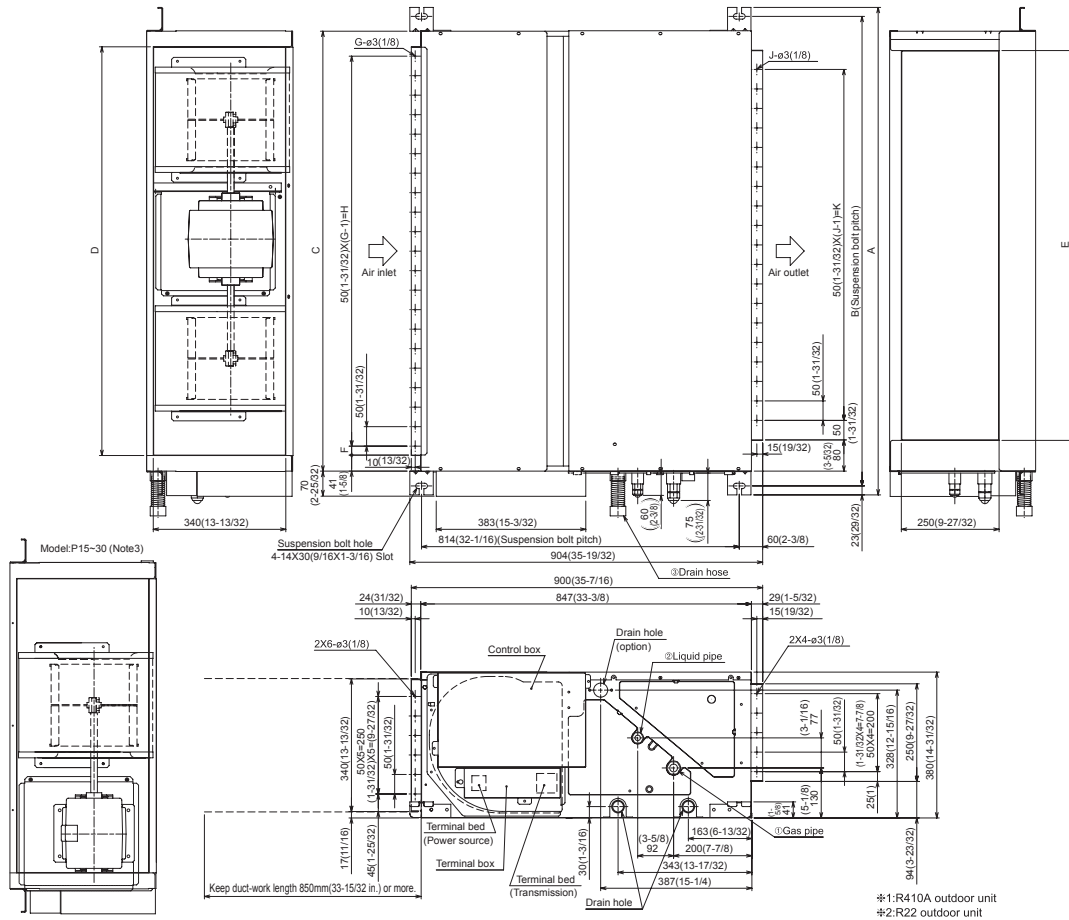
Sound Level (Low - High)
 @ 208V 31 - 41 dB(A)
 @ 230V 38 - 44 dB(A)

* Cooling / Heating capacity indicated at operation under the following conditions:
 Cooling | Indoor: 80° F (27° C) DB / 67° F (19° C) WB, Outdoor 95° F (35° C) DB
 Heating | Indoor: 70° F (21° C) DB, Outdoor 47° F (8° C) DB / 43° F (6° C) WB

Notes:

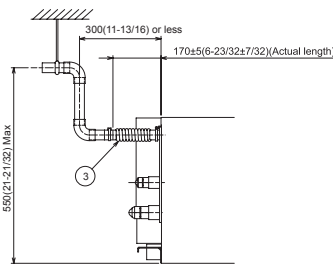


Model: PEFY-P54NMHU-E – DIMENSIONS



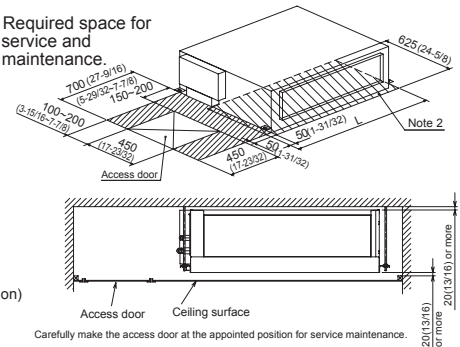
Model	A	B	C	D	E	F	G	H	J	K	L	① Gas pipe <Flare>	② Liquid pipe <Flare>	③ Drain hose
PEFY-P15NMHU-E	800 (31-1/2)	754 (29-11/16)	680 (26-25/32)	600 (23-5/8)	550 (21-21/32)	50 (1-31/32)	11	500 (19-11/16)	10	450 (17-23/32)	780 (30-23/32)	#1 ø12.7(1/2) #2 ø15.88(5/8)	#1 ø6.35(1/4) #2 ø9.52(3/8)	Drain hose 32mm(1-1/4inch) <flexible joint> (accessory)
PEFY-P18NMHU-E	1050 (41-11/32)	1004 (39-17/32)	930 (36-5/8)	850 (33-1/2)	800 (31-1/2)	25 (1)	17	800 (31-1/2)	15	700 (27-9/16)	1030 (40-9/16)	ø15.88(5/8)	ø9.52(3/8)	
PEFY-P24NMHU-E	1250 (49-7/32)	1204 (47-13/32)	1130 (44-1/2)	1050 (41-11/32)	1000 (39-3/8)	25 (1)	21	1000 (39-3/8)	19	900 (35-7/16)	1230 (48-7/16)	#1 ø15.88(5/8) #2 ø19.05(3/4)	#1 ø9.52(3/8) #2 ø9.52(3/8)	

- Note 1. Use M10 screw for the suspension bolt (field supply).
- Keep the service space for the maintenance from the bottom when the heat exchanger is cleaned.
 - This chart indicates for PEFY-P36-48-54NMHU-E models, which have two fans. PEFY-P15-18-24-27-30NMHU-E models have one fan.
 - Make sure to install the air filter (field supply) on the air intake side. In case field supplied air filter is used, attach it where the filter service is easily done.
 - On Model :18,36,48 and 54, use flare nut packed with the indoor unit, when connecting the outdoor unit for R22.



When installing the drain water lifting-up mechanism (option)

Required space for service and maintenance.



Intertek

FORM# PEFY-P54NMHU-E - 201402

Specifications are subject to change without notice.
© 2014 Mitsubishi Electric US, Inc.



COOLING & HEATING

1340 Satellite Boulevard
Suwanee, GA 30024
Tele: 678-376-2900 • Fax: 800-889-9904
Toll Free: 800-433-4822
www.mehvac.com