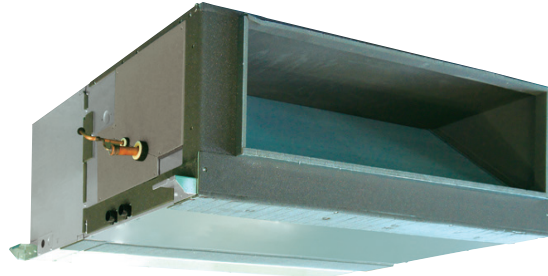


Job Name:

Schedule Reference:

Date:



**GENERAL FEATURES**

- Dual set point functionality
- High external static pressure capabilities
- Ducted fan coil supports multiple configurations for flexible installation

**OPTIONS**

- Drain pump.....PAC-KE04DM-F
- Condensate Pump.....BlueDiamond X87-711/721; 115/230V
- Condensate Pump.....Sauermann SI30-115/230; 115/230V
- Filter Box (Includes 2" MERV 13 filter).....FBH2-3
- CN24 Relay Kit.....CN24RELAY-KIT-CM3

**SPECIFICATIONS**

**Capacity\***

Cooling ..... 48,000 Btu/h  
 Heating ..... 54,000 Btu/h

**Power**

Power Source ..... 208-230V, 1 phase, 60Hz

**Power Consumption**

Cooling (208/230V) ..... 0.683 / 0.754 kW  
 Heating (208/230V) ..... 0.683 / 0.754 kW

**Current**

Cooling (208/230V) ..... 3.38 / 3.73 A  
 Heating (208/230V) ..... 3.38 / 3.73 A  
 Minimum Circuit Ampacity (MCA) (208/230V) . 4.23 / 4.67 A  
 Maximum Overcurrent Protection (MOCP) . . . . . 15A

**External Finish** . . . . . Galvanized steel plate

**Dimensions**

Inches . . . . . 14-31/32 h x 47-1/4 w x 35-7/16 d  
 mm . . . . . 380 h x 1200 w x 900 d

**Net Weight** . . . . . 155 lb / 70 kg

**Coil Type** . . . . . Cross fin

(aluminum plate fin and copper tube)

**Fan**

Type x Quantity . . . . . Sirocco fan x 2  
 Airflow Rate (Low - High) . . . . . 936 - 1342 CFM

**External Static Pressure**

@ 208V . . . . . 0.20 (default) - 0.64 in. WG  
 @ 230V . . . . . 0.40-0.60 (default) - 0.80 in. WG

**Motor Type** . . . . . Single phase induction motor

**Air Filter** . . . . . Filter must be procured locally

**Refrigerant Pipe Dimensions**

R410A

Liquid . . . . . 3/8" / 9.52 mm flare  
 Gas . . . . . 5/8" / 15.88 mm flare

**Drainpipe Dimension** . . . . . O.D.1-1/4" / 32 mm

**Sound Level (Low - High)**

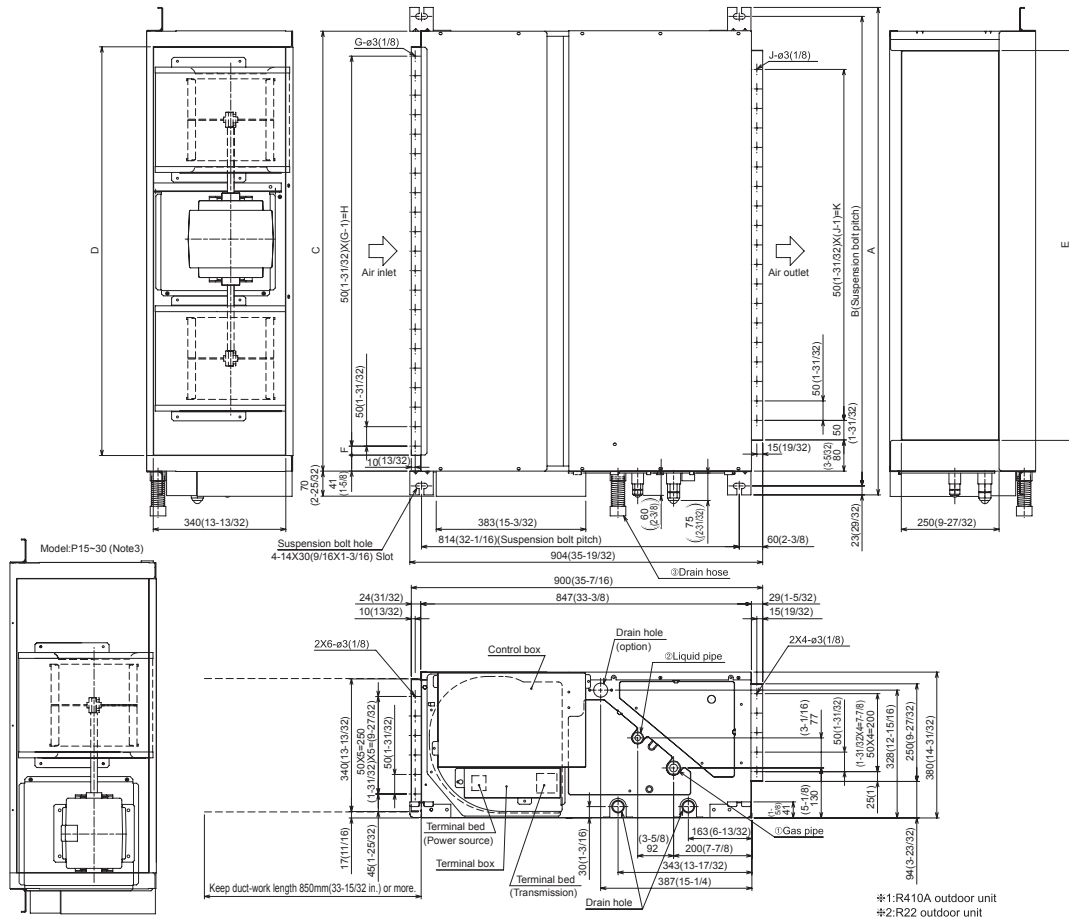
@ 208V . . . . . 31 - 41 dB(A)  
 @ 230V . . . . . 38 - 44 dB(A)

\* Cooling / Heating capacity indicated at operation under the following conditions:  
 Cooling | Indoor: 80° F (27° C) DB / 67° F (19° C) WB, Outdoor 95° F (35° C) DB  
 Heating | Indoor: 70° F (21° C) DB, Outdoor 47° F (8° C) DB / 43° F (6° C) WB

Notes:

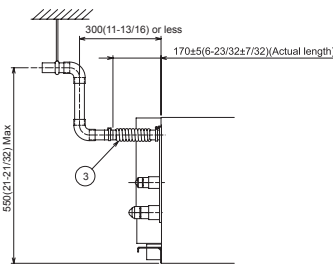


# Model: PEFY-P48NMHU-E – DIMENSIONS



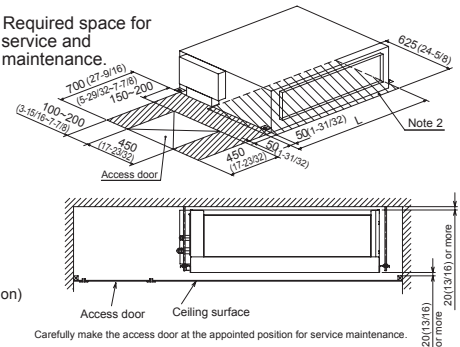
Model	A	B	C	D	E	F	G	H	J	K	L	① Gas pipe <Flare>	② Liquid pipe <Flare>	③ Drain hose
PEFY-P15NMHU-E	800 (31-1/2)	754 (29-11/16)	680 (26-25/32)	600 (23-5/8)	550 (21-21/32)	50 (1-31/32)	11	500 (19-11/16)	10	450 (17-23/32)	780 (30-23/32)	#1 ø12.7(1/2) #2 ø15.88(5/8)	#1 ø6.35(1/4) #2 ø9.52(3/8)	Drain hose 32mm(1-1/4inch) <flexible joint> (accessory)
PEFY-P18NMHU-E	1050 (41-11/32)	1004 (39-17/32)	930 (36-5/8)	850 (33-1/2)	800 (31-1/2)	25 (1)	17	800 (31-1/2)	15	700 (27-9/16)	1030 (40-9/16)	ø15.88(5/8)	ø9.52(3/8)	
PEFY-P24NMHU-E	1250 (49-7/32)	1204 (47-13/32)	1130 (44-1/2)	1050 (41-11/32)	1000 (39-3/8)	25 (1)	21	1000 (39-3/8)	19	900 (35-7/16)	1230 (48-7/16)	#1 ø15.88(5/8) #2 ø19.05(3/4)	#1 ø9.52(3/8) #2 ø9.52(3/8)	

- Note 1. Use M10 screw for the suspension bolt (field supply).  
 2. Keep the service space for the maintenance from the bottom when the heat exchanger is cleaned.  
 3. This chart indicates for PEFY-P36-48-54NMHU-E models, which have two fans. PEFY-P15-18-24-27-30NMHU-E models have one fan.  
 4. Make sure to install the air filter (field supply) on the air intake side. In case field supplied air filter is used, attach it where the filter service is easily done.  
 5. On Model :18,36,48 and 54, use flare nut packed with the indoor unit, when connecting the outdoor unit for R22.



When installing the drain water lifting-up mechanism (option)

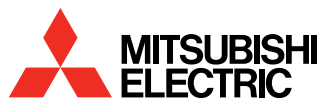
### Required space for service and maintenance.



**Intertek**

FORM# PEFY-P48NMHU-E - 201402

Specifications are subject to change without notice.  
 © 2014 Mitsubishi Electric US, Inc.



COOLING & HEATING

1340 Satellite Boulevard  
 Suwanee, GA 30024  
 Tele: 678-376-2900 • Fax: 800-889-9904  
 Toll Free: 800-433-4822  
 www.mehvac.com