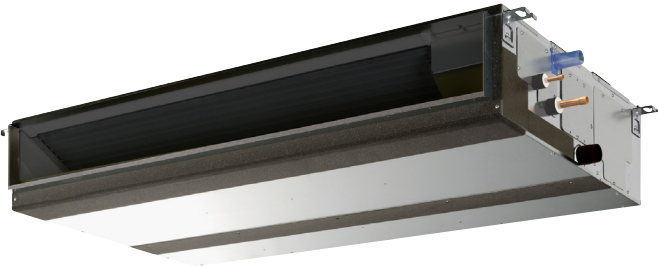


Job Name:

Schedule Reference:

Date:



GENERAL FEATURES

- Dual set point functionality
- Multiple fan speed settings
- Auto fan mode
- 9-7/8" (250mm) high for low ceiling heights
- Built-in condensate lift; lifts to 27-9/16" (700 mm)
- Ducted fan coil supporting multiple configurations for flexible installation

OPTIONS

- External Heater Adapter.....CN24RELAY-KIT-CM3
- Filter Box (Includes 2" MERV 13 filter).....FBM2-3

SPECIFICATIONS

Capacity*

Cooling.....27,000 Btu/h
 Heating.....30,000 Btu/h

Power

Power Source.....208 / 230V, 1-phase, 60Hz

Power Consumption

Cooling.....0.17 kW
 Heating.....0.15 kW

Current

Cooling.....1.31 A
 Heating.....1.20 A
 Minimum Circuit Ampacity (MCA).....2.73 A
 Maximum Overcurrent Protection (MOCP) Fuse.....15 A

External Finish.....Galvanized-steel Sheet

External Dimensions

Inches.....9-7/8 H x 43-5/16 W x 28-7/8 D
 mm.....250 H x 1,100 W x 732 D

Net Weight.....67 lbs. / 30 kg

Coil Type.....Cross Fin
 (Aluminum Plate Fin and Copper Tube)

Fan

Type x Quantity.....Sirocco Fan x 2
 Airflow Rate (Low-Mid-High).....618 - 742 - 883 CFM
 External Static Pressure.....0.14 - 0.20 - 0.28 - 0.40 - 0.60"WG
 Motor Type.....DC Motor

Air Filter.....Polypropylene Honeycomb

Refrigerant Piping Dimensions

Liquid (High Pressure).....3/8" / 9.52 mm (Brazed)
 Gas (Low Pressure).....5/8" / 15.88 mm (Brazed)

Drainpipe Dimension.....O.D. 1-1/4" / 32 mm

Sound Pressure Levels

Low-Mid-High.....30 - 34 - 39 dB(A)

* Cooling / Heating capacity indicated at the maximum value at operation under the following conditions:
 Cooling | Indoor: 80° F (27° C) DB / 67° F (19° C) WB,
 Cooling | Indoor: Outdoor 95° F (35° C) DB
 Heating | Indoor: 70° F (21° C) DB,
 Heating | Outdoor 47° F (8° C) DB / 43° F (6° C) WB

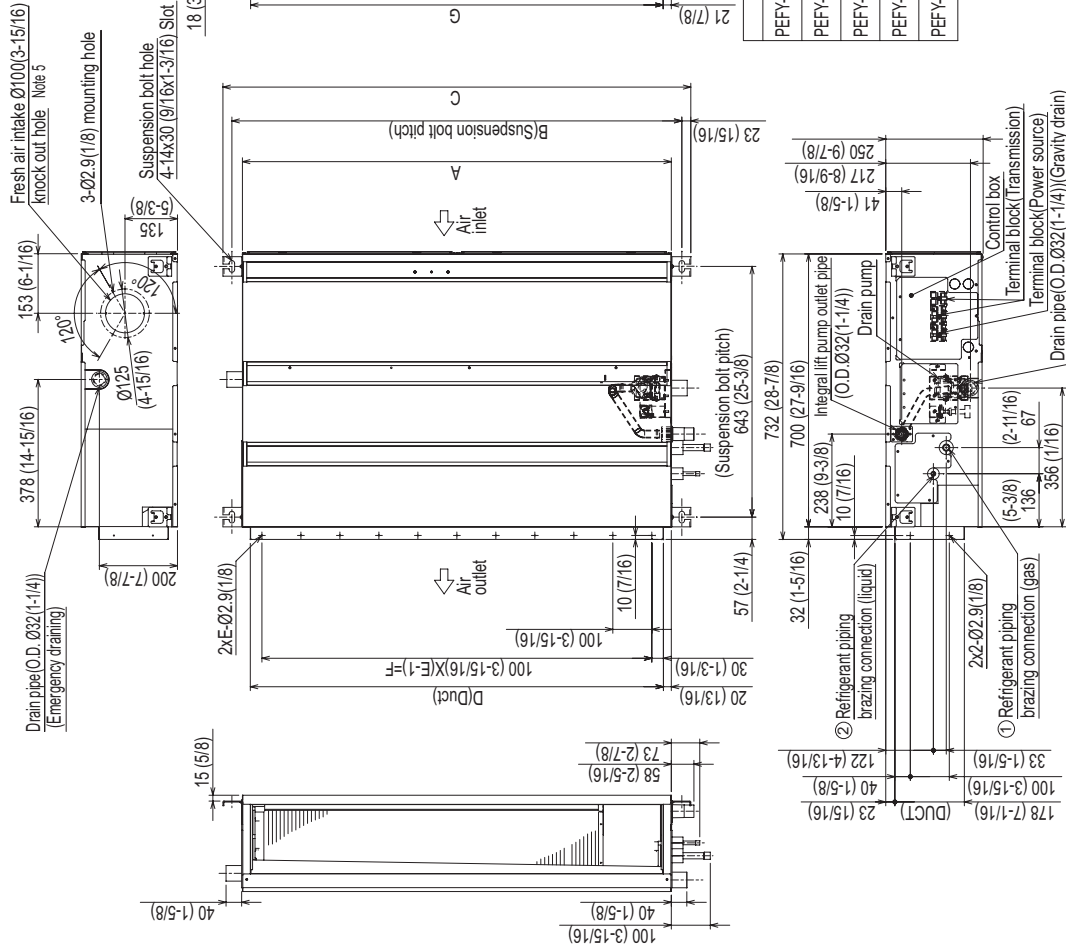
Notes:



Model: PEFY-P27NMAU-E2 – DIMENSIONS

Unit: mm (in)

- Note
1. Use an M10 screw for the suspension bolt (field supply).
 2. Keep the service space for maintenance at the bottom.
 3. This drawing is for PEFY-P24-27-30-36-48-54NMAU-E2 models, which have 2 fans. PEFY-P06-08-12-15-18NMAU-E2 models have 1 fan.
 4. If the inlet duct is used, remove the air filter (supplied with the unit), then install the filter (field supply) at the suction side.
 5. Heat air to 0°C (32°F) or higher when taking fresh air with a fresh air intake.



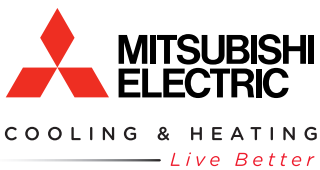
| Model | ① Gas pipe | ② Liquid pipe |
|-----------------------|--------------|---------------|
| PEFY-P06,08,12NMAU-E2 | Ø12.7 (1/2) | Ø6.35 (1/4) |
| PEFY-P15,P18NMAU-E2 | | |
| PEFY-P24,27,30NMAU-E2 | Ø15.88 (5/8) | Ø9.52 (3/8) |
| PEFY-P36,48NMAU-E2 | | |
| PEFY-P54NMAU-E2 | | |

| Model | A | B | C | D | E | F | G |
|-----------------------|----------------|----------------|-----------------|----------------|----|----------------|-----------------|
| PEFY-P06,08,12NMAU-E2 | 700 (27-9/16) | 754 (29-11/16) | 800 (31-1/2) | 660 (26) | 7 | 600 (23-5/8) | 658 (25-15/16) |
| PEFY-P15,P18NMAU-E2 | 900 (35-7/16) | 954 (37-9/16) | 1000 (39-3/8) | 860 (33-7/8) | 9 | 800 (31-1/2) | 858 (33-13/16) |
| PEFY-P24,27,30NMAU-E2 | 1100 (43-5/16) | 1154 (45-7/16) | 1200 (47-1/4) | 1060 (41-3/4) | 11 | 1000 (39-3/8) | 1058 (41-11/16) |
| PEFY-P36,48NMAU-E2 | 1400 (55-1/8) | 1454 (57-1/4) | 1500 (59-1/16) | 1360 (53-9/16) | 14 | 1300 (51-1/8) | 1358 (53-11/16) |
| PEFY-P54NMAU-E2 | 1600 (63) | 1654 (65-1/8) | 1700 (66-15/16) | 1560 (61-7/16) | 16 | 1500 (59-1/16) | 1558 (61-3/8) |



FORM# PEFY-P27NMAU-E2 - 201310

Specifications are subject to change without notice.
© 2013 Mitsubishi Electric US, Inc.



1340 Satellite Boulevard
Suwanee, GA 30024
Tele: 678-376-2900 • Fax: 800-889-9904
Toll Free: 800-433-4822
www.mehvac.com