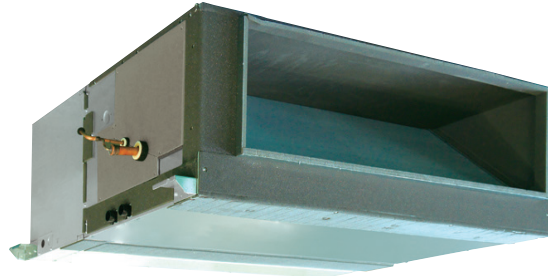


Job Name:

Schedule Reference:

Date:



GENERAL FEATURES

- Dual set point functionality
- High external static pressure capabilities
- Ducted fan coil supports multiple configurations for flexible installation

OPTIONS

- Drain pump.....PAC-KE04DM-F
- Condensate Pump.....BlueDiamond X87-711/721; 115/230V
- Condensate Pump.....Sauermann SI30-115/230; 115/230V
- Filter Box (Includes 2" MERV 13 filter).....FBH2-1
- CN24 Relay Kit.....CN24RELAY-KIT-CM3

SPECIFICATIONS

Capacity*

Cooling 15,000 Btu/h
 Heating 17,000 Btu/h

Power

Power Source 208-230V, 1 phase, 60Hz

Power Consumption

Cooling (208/230V) 0.188 / 0.207 kW
 Heating (208/230V) 0.188 / 0.207 kW

Current

Cooling (208/230V) 0.96 / 1.06 A
 Heating (208/230V) 0.96 / 1.06 A
 Minimum Circuit Ampacity (MCA) (208/230V). 1.20 / 1.33 A
 Maximum Overcurrent Protection (MOCP). 15A

External Finish Galvanized steel plate

Dimensions

Inches 14-31/32 h x 29-17/32 w x 35-7/16 d
 mm 380 h x 750 w x 900 d

Net Weight 98 lb / 44 kg

Coil Type Cross fin
 (aluminum plate fin and copper tube)

Fan

Type x Quantity Sirocco fan x 1
 Airflow Rate (Low - High) 353 - 494 CFM
 External Static Pressure
 @ 208V 0.20 (default) - 0.64 in. WG
 @ 230V 0.40-0.60 (default) - 0.80 in. WG
 Motor Type Single phase induction motor

Air Filter Filter must be procured locally

Refrigerant Pipe Dimensions

Liquid 1/4" / 6.35 mm flare
 Gas 1/2" / 12.7 mm flare

Drainpipe Dimension O.D.1-1/4" / 32 mm

Sound Level (Low - High)

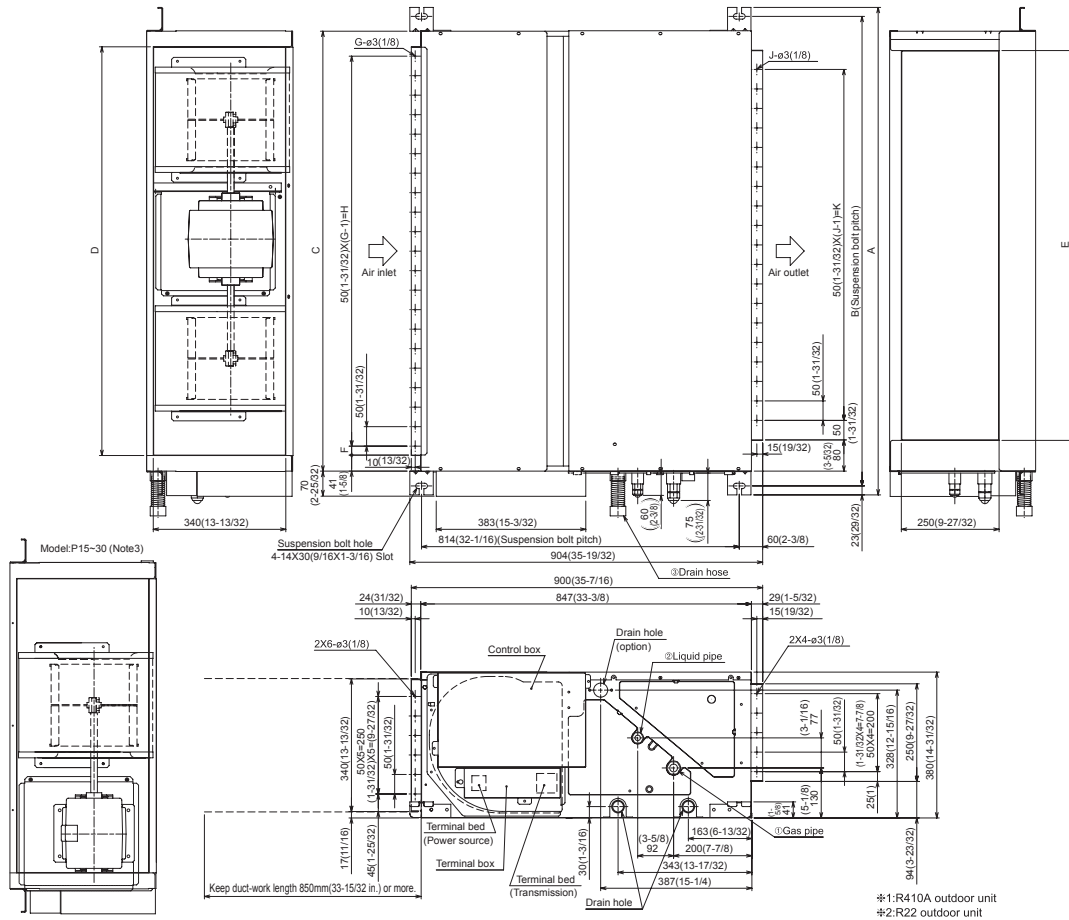
@ 208V 25 - 32 dB(A)
 @ 230V 34 - 39 dB(A)

* Cooling / Heating capacity indicated at operation under the following conditions:
 Cooling | Indoor: 80° F (27° C) DB / 67° F (19° C) WB, Outdoor 95° F (35° C) DB
 Heating | Indoor: 70° F (21° C) DB, Outdoor 47° F (8° C) DB / 43° F (6° C) WB

Notes:

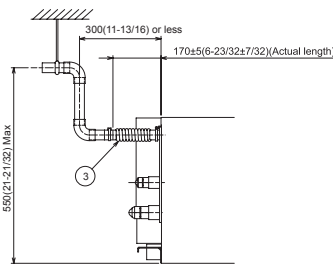


Model: PEFY-P15NMHU-E – DIMENSIONS



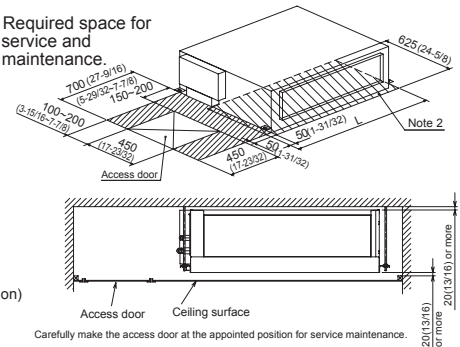
Model	A	B	C	D	E	F	G	H	J	K	L	① Gas pipe <Flare>	② Liquid pipe <Flare>	③ Drain hose
PEFY-P15NMHU-E	800 (31-1/2)	754 (29-11/16)	680 (26-25/32)	600 (23-5/8)	550 (21-21/32)	50 (1-31/32)	11	500 (19-11/16)	10	450 (17-23/32)	780 (30-23/32)	#1 ø12.7(1/2) #2 ø15.88(5/8)	#1 ø6.35(1/4) #2 ø9.52(3/8)	Drain hose 32mm(1-1/4inch) <flexible joint> (accessory)
PEFY-P18NMHU-E	1050 (41-11/32)	1004 (39-17/32)	930 (36-5/8)	850 (33-1/2)	800 (31-1/2)	25 (1)	17	800 (31-1/2)	15	700 (27-9/16)	1030 (40-9/16)	ø15.88(5/8)	ø9.52(3/8)	
PEFY-P24NMHU-E	1250 (49-7/32)	1204 (47-13/32)	1130 (44-1/2)	1050 (41-11/32)	1000 (39-3/8)	25 (1)	21	1000 (39-3/8)	19	900 (35-7/16)	1230 (48-7/16)	#1 ø15.88(5/8) #2 ø19.05(3/4)	#1 ø9.52(3/8) #2 ø9.52(3/8)	

- Note 1. Use M10 screw for the suspension bolt (field supply).
 2. Keep the service space for the maintenance from the bottom when the heat exchanger is cleaned.
 3. This chart indicates for PEFY-P36-48-54NMHU-E models, which have two fans. PEFY-P15-18-24-27-30NMHU-E models have one fan.
 4. Make sure to install the air filter (field supply) on the air intake side. In case field supplied air filter is used, attach it where the filter service is easily done.
 5. On Model :18,36,48 and 54, use flare nut packed with the indoor unit, when connecting the outdoor unit for R22.



When installing the drain water lifting-up mechanism (option)

Required space for service and maintenance.



Intertek

FORM# PEFY-P15NMHU-E - 201402

Specifications are subject to change without notice.
 © 2014 Mitsubishi Electric US, Inc.



COOLING & HEATING

1340 Satellite Boulevard
 Suwanee, GA 30024
 Tele: 678-376-2900 • Fax: 800-889-9904
 Toll Free: 800-433-4822
 www.mehvac.com