

Job Name: \_\_\_\_\_

Drawing Reference: \_\_\_\_\_

Schedule No. \_\_\_\_\_



**External Dimensions**

Inches.....7-7/8 h x 31-1/8 w x 27-9/16 d  
mm.....200 h x 790 w x 700 d

**Net Weight**.....42 lbs. / 19 kg

**Condensate Lift**

**Mechanism (Included)**.....21-11/16" / 550 mm

**Coil Type**.....Cross Fin  
(Aluminum Fin and Copper Tube)

**Fan**

Type x Quantity.....Sirocco Fan x 2  
Airflow Rate

(Low - Mid - High).....176 - 212 - 247 cfm

**Motor**

Type.....DC Motor

Output.....0.096 kW

**Standard Air Filter**.....Polypropylene Honeycomb

**Refrigerant Piping Dimensions**

**R410A**

Liquid (High Pressure).....1/4" / 6.35 mm Brazed

Gas (Low Pressure).....1/2" / 12.7 mm Brazed

**Drainpipe Dimension**.....O.D. 1-1/4" / 32 mm

**Sound Pressure Level**

**(Low - Mid - High)**.....22 - 24 - 28 dB(A)

\* Cooling / Heating capacity indicated at the maximum value at operation under the following conditions:

Cooling: Indoor 80°F (27°C) DB / 67°F (19°C) WB, Outdoor 95°F (35°C) DB

Heating: Indoor 70°F (21°C) DB, Outdoor 47°F (8°C) DB / 43°F (6°C) WB

**Note:** PEFY-P06NMSU-E cannot be used with PUHY/PURY-P-TGMU or PQHY/PQRY-P-TGMU units.

**Note:** Ventilation air: Providing sufficient ventilation air is an important part of every building design. ASHRAE Standard 62 provides the minimum ventilation air requirement. Also, check local codes.

**GENERAL FEATURES**

- Ultra-thin ducted ceiling-concealed model
- Only 7-7/8" (200 mm) high for installation in tight spaces such as ceiling cavities or dropped ceilings
- Multiple sizes from 6,000 to 24,000 Btu/h
- Choose from four external static pressure options: 0.02, 0.06, 0.14 or 0.20 in. WG; factory set at 0.06 in. WG
- Quiet operation
- R410A refrigerant-compatible
- Includes filter and condensate lift mechanism (21-11/16" lift) as standard
- One-year limited warranty on parts and defects

**SPECIFICATIONS**

**Capacity\***

Cooling.....6,000 Btu/h

Heating.....6,700 Btu/h

**Power**

Power Source.....208 / 230V, 1-phase, 60Hz

**Power Consumption**

Cooling.....0.05 kW

Heating.....0.03 kW

**Current**

Cooling.....0.41 A

Heating.....0.31 A

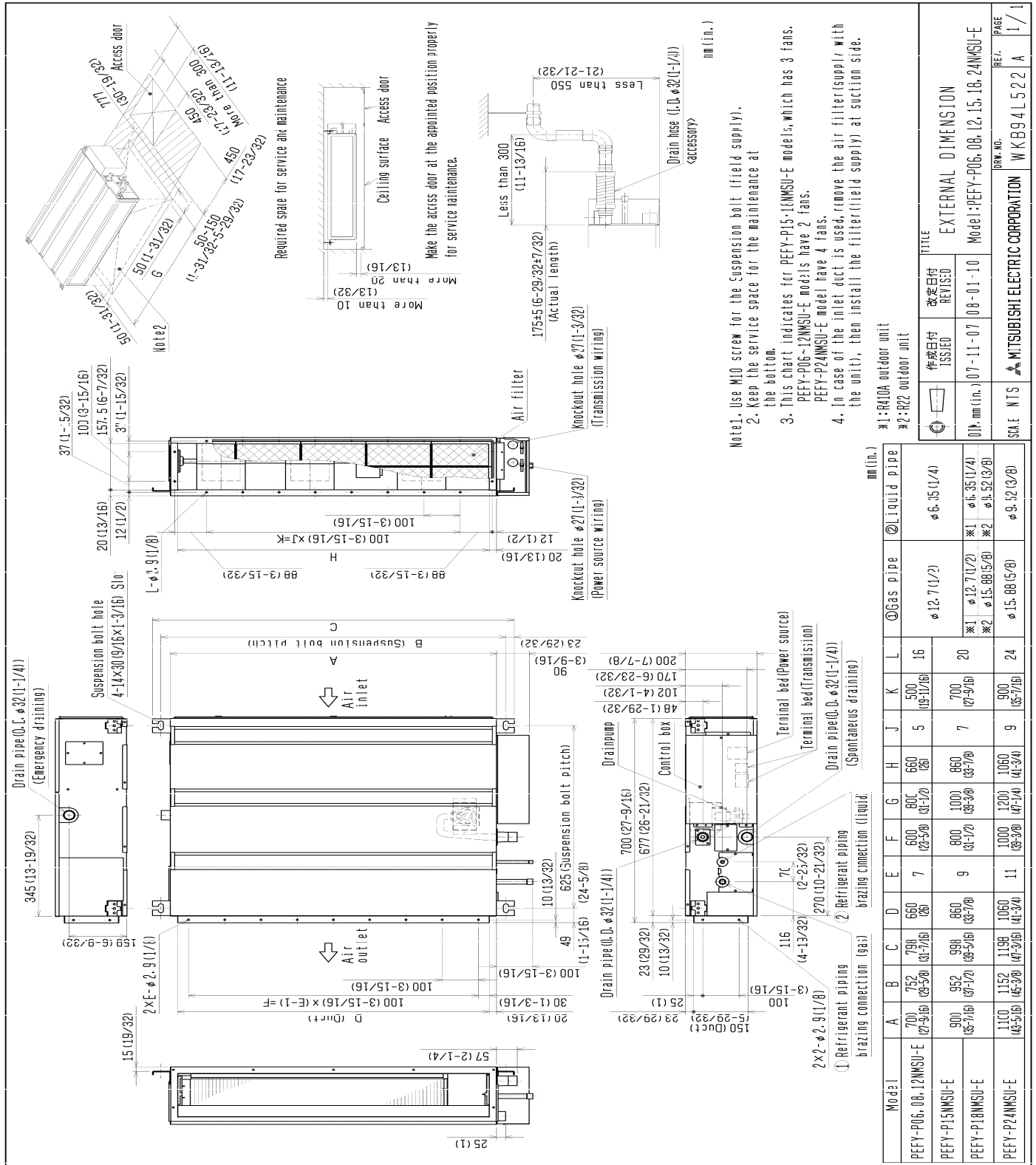
Minimum Circuit Ampacity (MCA).....0.52 A

Maximum Overcurrent Protection (MOCP) Fuse.....15 A

**External Finish**.....Galvanized Steel Sheets

Notes:

# Model: PEFY-P06NMSU-E - DIMENSIONS



- Note 1. Use M10 screw for the Suspension bolt (field supply).  
 2. Keep the service space for the maintenance at the bottom.  
 3. This chart indicates for PEFY-P15.12NMSU-E models, which has 3 fans. PEFY-P06.12NMSU-E models have 2 fans. PEFY-P24NMSU-E model have 4 fans.  
 4. In case of the inlet duct is used, remove the air filter(supply) with the unit, then install the filter(field supply) at suction side.

Required space for service and maintenance

Make the access door at the appointed position properly for service maintenance.

mm (in.)

Model: PEFY-P06.08.12.15.18.24NMSU-E

TITLE		EXTERNAL DIMENSION	
作成日付 ISSUED	改定日付 REVISED	01	02
07-11-07	08-01-10	φ12.7(1/2)	φ15.88(5/8)
		φ15.88(5/8)	φ9.52(3/8)

Model	① Gas pipe	② Liquid pipe
PEFY-P06.08.12NMSU-E	φ12.7(1/2)	φ6.35(1/4)
PEFY-P15NMSU-E	φ12.7(1/2)	φ6.35(1/4)
PEFY-P18NMSU-E	φ15.88(5/8)	φ9.52(3/8)
PEFY-P24NMSU-E	φ15.88(5/8)	φ9.52(3/8)



Mitsubishi Electric Air Conditioning & Refrigeration Systems Works acquired ISO 9001 certification under Series 9000 of the International Standard Organization (ISO) based on a review of quality warranties for the production of refrigeration and air conditioning equipment.

ISO Authorization System  
 The ISO 9000 series is a plant authorization system relating to quality warranties as stipulated by the ISO. ISO 9001 certifies quality warranties based on the "design, development, production, installation and auxiliary services" for products built at an authorized plant.



Mitsubishi Electric Air Conditioning & Refrigeration Systems Works acquired environmental management system standard ISO 14001 certification.

The ISO 14000 series is a set of standards applying to environmental protection set by the International Standard Organization (ISO).



**MITSUBISHI ELECTRIC**  
 HVAC Advanced Products Division  
 Mitsubishi Electric & Electronics USA, Inc.  
 3400 Lawrenceville Suwanee Rd.  
 Suwanee, GA 30024  
 Tele: 678-376-2900 • Fax: 800-889-9904  
 Toll Free: 800-433-4822 (##4)  
 www.mehvac.com  
 Specifications are subject to change without notice.