

Job Name:	
System Reference:	Date:



OUTDOOR VRF HEAT PUMP SYSTEM

UNIT OPTION

- Standard Model.....PUHY-P168TLMU-A
- Seacoast (BS) Model.....PUHY-P168TLMU-A-BS

ACCESSORIES

- Joint Kit.....for details see Pipe Accessories Submittal
- Low Ambient Kitfor details see Low Ambient Kit Submittal
- Snow/Hail Guards Kit.....for details see Snow/Hail Guards Kit Submittal
- Base Pan Heater Kit.....for details see Base Pan Heater Kit Submittal

Specifications		Model Name
Unit Type		PUHY-P168TLMU-A (-BS)
Nominal Cooling Capacity (208/230V)	Btu/h	168,000
Nominal Heating Capacity (208/230V)	Btu/h	188,000
Operating Temperature Range *1	Cooling (Outdoor) *2	23~126° F (-5~52° C) DB
	Heating (Outdoor)	-13~60° F (-25~15.5° C) WB
External Dimensions (H x W x D)	In. (mm)	64-31/32 x 68-29/32 x 29-5/32 (1,650 x 1,750 x 740)
Net Weight	Lbs. (kg)	673 (305)
External Finish		Pre-coated galvanized steel sheet
Electrical Power Requirements	Voltage, Phase, Hertz	208 / 230V, 3-Phase, 60Hz
Minimum Circuit Ampacity (MCA)	A	58 / 54
Maximum Overcurrent Protection (MOP)	A	90 / 80
<i>Piping Diameter (Braze)</i>		
From ODU to First Joint or Header (In. / mm)	Liquid (High Pressure)	5/8 (15.88)
	Gas (Low Pressure)	1-1/8 (28.58)
Max. Total Refrigerant Line Length	Ft.	3,280
Max. Refrigerant Line Length (Between ODU & IDU)	Ft.	541
Max. Control Wiring Length	Ft.	1,640
Indoor Unit	Total Capacity	50~130% of outdoor unit capacity
	Model / Quantity	P06~P96/1~36
Sound Pressure Levels	dB(A)	62.0
<i>Fan</i>		
Type x Quantity		Propeller fan x 2
Airflow Rate	CFM	12,700
External Static Pressure	In. WG (Pa)	Selectable; 0, 0.12 or 0.24"WG; factory set to 0"W.G.
Compressor Operating Range		12% to 100%
Compressor Type x Quantity		Inverter scroll hermetic compressor x 1
Refrigerant		R410A; 26 lbs. + 1 oz. (11.8 kg)
Protection Devices	High Pressure	High pressure sensor, High pressure switch at 4.15 MPa (601 psi)
	Inverter Circuit (Comp. / Fan)	Over-current protection
AHRI Ratings (Ducted/Non-Ducted)	EER	11.6 / 12.5
	IEER	18.7 / 22.2
	COP	3.47 / 3.77

NOTES:
 *1. When applying product below -4° F, consult your design engineer for cold climate application best practices, including the use of a backup source for heating.
 *2. For details on extended cooling operation range down to -10° F DB, see Low Ambient Kit Submittal.

Outdoor Unit: PUHY-P168TLMU-A (-BS) – DIMENSIONS

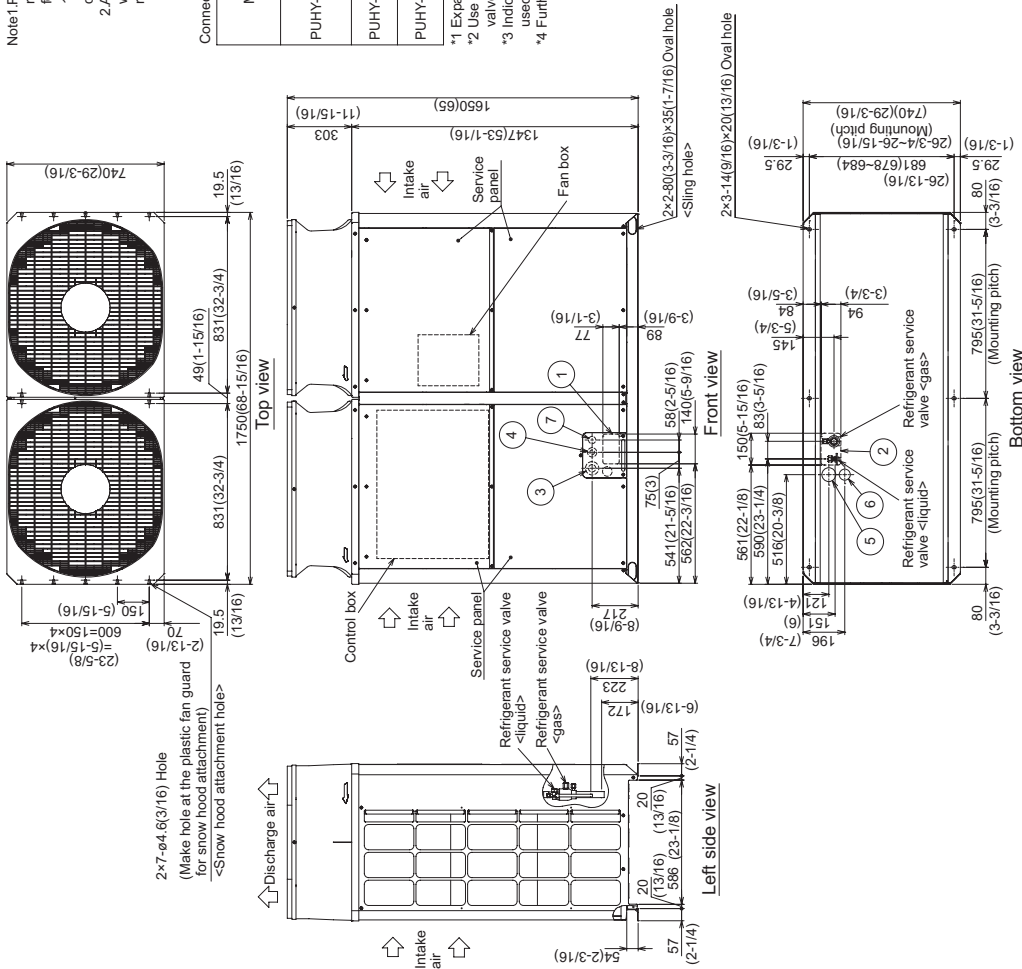
Unit : mm (in.)

Note1. Please refer to the engineering manual for information regarding necessary spacing around the unit and foundation work. Outdoor unit must be mounted at least 12" off the ground or 12" above the highest average snow depth, whichever is greater.
 2. At brazing of pipes, wrap the refrigerant service valve with wet cloth and keep the temperature of refrigerant service valve under 120°C(248°F).

Model	Connecting pipe specifications			Diameter	
	Liquid	Gas	Service valve	Liquid	Gas
PUHY-P120TLMU	ø9.52 Braze (3/8)2	ø12.7 Braze (1/2)1 *3,4	ø12.7 Braze (1/2)1	ø28.58 Braze (1-1/8)1	ø28.58 (1-1/8)
PUHY-P144TLMU	ø12.7 Braze (1/2)1	ø15.88 Braze (5/8)2			
PUHY-P168TLMU					

*1 Expand the on-site piping and connect to the refrigerant service valve piping.
 *2 Use the pipe joint(field supply) and connect to the refrigerant service valve piping.
 *3 Indicates dimensions and connection specifications in the case the unit is used in combination with other outdoor units.
 *4 Furnest piping length (OU from IU)ø40mm(1.31ft)

NO.	Usage	Specifications
①	For pipes	140 x 77 Knockout hole (5-9/16) (3-1/16)
②		150 x 94 Knockout hole (5-15/16)(3-3/4)
③		ø62.7 or ø34.5 Knockout hole (2-1/2) (1-3/8)
④	For wires	ø43.7 or ø22.2 Knockout hole (1-3/4) (7/8)
⑤		ø65 Knockout hole (2-9/16)
⑥		ø52 Knockout hole (2-1/16)
⑦	For transmission cables	ø34 Knockout hole (1-3/8)



NOTES:

SEACOAST PROTECTION

- Anti-corrosion Protection: A coating treatment is applied to condenser coil for protection from air contaminants.
- Standard: Salt Spray Test Method - no unusual rust development to 480 hours.
- Sea Coast (BS): Salt Spray Test Method (JRA 9002) - no unusual rust development to 960 hours.



COOLING & HEATING

1340 Satellite Boulevard, Suwanee, GA 30024
 Toll Free: 800-433-4822 www.mehvac.com

