



Submittal Data Sheet

1.25-Ton Round Flow Sensing Cassette

FXFQ15TVJU

FEATURES

- True 360° airflow distribution and three room sensors enables optimized occupant comfort and efficiency
- Optional self-cleaning filter panel to further increase efficiency and reduce maintenance costs
- Individually controlled supply air louvers for comfortable air supply
- Improved efficiency with new DC fan motor and auto logic that adjusts fan speed based on space load
- Industry leading flexibility with 23 possible airflow patterns
- Standard Limited Warranty: 10-year warranty on compressor and all parts

BENEFITS

- Compact design to allow for installation in small ceiling voids
- Very low sound levels increases flexibility regarding location of the unit
- Increased indoor air quality with high efficiency filter options & ventilation connection kit
- Automatic occupancy dependant Set back function to save energy





Submittal Data Sheet

1.25-Ton Round Flow Sensing Cassette

FXFQ15TVJU

PERFORMANCE

Indoor Unit Model No.	FXFQ15TVJU	Indoor Unit Name:	1.25-Ton Round Flow Sensing Cassette
Type:	Ceiling Cassette	Rated Cooling Conditions:	Indoor (°F DB/WB): 80 / 67 Ambient (°F DB/WB): 95 / 75
Rated Cooling Capacity (Btu/hr):	15,000	Rated Heating Conditions:	Indoor (°F DB/WB): 70 / 70 Ambient (°F DB/WB): 47 / 43
Sensible Capacity (Btu/hr):	11,300	Rated Piping Length(ft):	
Cooling Input Power (kW):	0.040	Rated Height Separation (ft):	
Rated Heating Capacity (Btu/hr):	17,000		
Heating Input Power (kW):	0.04		

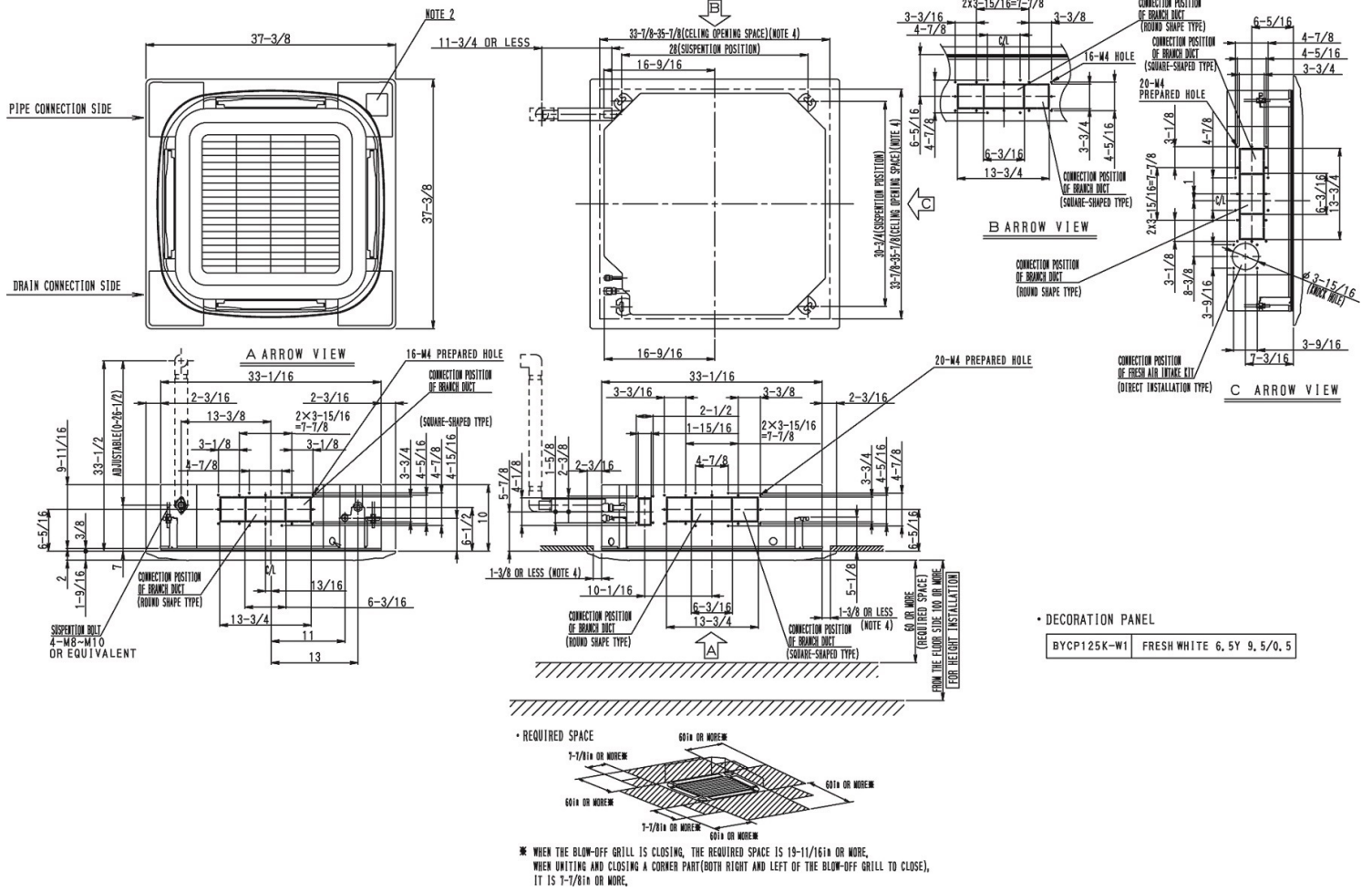
INDOOR UNIT DETAILS

Power Supply (V/Hz/Ph):	208-230 / 60 / 1	Airflow Rate (H/M/L) (CFM):	512/459/388
Power Supply Connections:	L1, L2, Ground	Moisture Removal (Gal/hr):	
Min. Circuit Amps MCA (A):	0.40	Gas Pipe Connection (inch):	1/2
Max Overcurrent Protection (MOP) (A):		Liquid Pipe Connection (inch):	1/4
Dimensions (HxWxD) (in):	9-11/16 x 33-1/16 x 33-1/16	Condensate Connection (inch):	1-1/4
Panel (HxWxD) (in):	2 x 37-3/8 x 37-3/8	Sound Pressure (H/L) (dBA):	30/27
Net Weight (lb):	42	Sound Power Level (dBA):	
Panel Weight (lb):	22	Ext. Static Pressure (Rated/Max) (inWg):	0.00 / 0.00

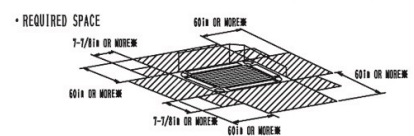
Submittal Data Sheet
 1.25-Ton Round Flow Sensing Cassette
 FXFQ15TVJU

DIMENSIONAL DRAWING

**FXFQ07-24TVJU
 Unit (inches)**



• DECORATION PANEL	
BYCP125K-W1	FRESH WHITE 6.5Y 9.5/0.5



* WHEN THE BLOW-OFF GRILL IS CLOSING, THE REQUIRED SPACE IS 19-11/16in OR MORE, WHEN UNTITING AND CLOSING A CORNER PART (BOTH RIGHT AND LEFT OF THE BLOW-OFF GRILL TO CLOSE), IT IS 7-7/8in OR MORE.