

| | |
|-------------------|-------|
| Job Name: | Date: |
| System Reference: | |



OUTDOOR VRF HEAT PUMP WITH HEAT RECOVERY SYSTEM

UNIT OPTION

- Standard Model.....PURY-P120YLMU-A
- Seacoast (BS) Model.....PURY-P120YLMU-A-BS

ACCESSORIES

- Joint Kit.....for details see Pipe Accessories Submittal
- BC Controller (required).....for details see BC Controller Submittals
- Low Ambient Kitfor details see Low Ambient Kit Submittal
- Snow/Hail Guards Kit.....for details see Snow/Hail Guards Kit Submittal
- Base Pan Heater Kit.....for details see Base Pan Heater Kit Submittal

| Specifications | | Model Name |
|--|--------------------------------|--|
| Unit Type | | PURY-P120YLMU-A (-BS) |
| Nominal Cooling Capacity (460V) | Btu/h | 120,000 |
| Nominal Heating Capacity (460V) | Btu/h | 135,000 |
| Operating Temperature Range *1 | Cooling (Outdoor) *2 | 23~126° F (-5~52° C) DB |
| | Heating (Outdoor) | -13~60° F (-25~15.5° C) WB |
| External Dimensions (H x W x D) | In. (mm) | 64-31/32 x 68-29/32 x 29-5/32 (1,650 x 1,750 x 740) |
| Net Weight | Lbs. (kg) | 730 (331) |
| External Finish | | Pre-coated galvanized steel sheet |
| Electrical Power Requirements | Voltage, Phase, Hertz | 460V, 3-Phase, 60Hz |
| Minimum Circuit Ampacity (MCA) | A | 19 |
| Maximum Overcurrent Protection (MOP) | A | 30 |
| Piping Diameter (Brazed) (In. / mm) | Liquid (High Pressure) | 3/4 (19.05) |
| | Gas (Low Pressure) | 1-1/8 (28.58) |
| Max. Total Refrigerant Line Length | Ft. | 1,969 |
| Max. Refrigerant Line Length (Between ODU & IDU) | Ft. | 541 |
| Max. Control Wiring Length | Ft. | 1,640 |
| Indoor Unit | Total Capacity | 50~150% of outdoor unit capacity |
| | Model / Quantity | P06~P96/1~30 |
| Sound Pressure Levels | dB(A) | 60.0 |
| Fan | | |
| Type x Quantity | | Propeller fan x 2 |
| Airflow Rate | CFM | 11,300 |
| External Static Pressure | In. WG | Selectable; 0, 0.12 or 0.24"WG; factory set to 0"W.G. |
| Compressor Operating Range | | 15% to 100% |
| Compressor Type x Quantity | | Inverter scroll hermetic compressor |
| Refrigerant | | R410A; 23 lbs. + 2 oz. (10.5 kg) |
| Protection Devices | High Pressure | High pressure sensor, High pressure switch at 4.15 MPa (601 psi) |
| | Inverter Circuit (Comp. / Fan) | Over-current protection |
| | Fan Motor | Thermal switch |
| AHRI Ratings (Ducted/Non-Ducted) | EER | 12.8 / 14.7 |
| | IEER | 19.9 / 24.6 |
| | COP | 3.52 / 3.99 |
| | SCHE | 25.3 / 30.3 |

NOTES:
 *1. When applying product below -4° F, consult your design engineer for cold climate application best practices, including the use of a backup source for heating.
 *2. For details on extended cooling operation range down to -10° F DB, see Low Ambient Kit Submittal.

Model: PURY-P120YLMU-A (-BS) – DIMENSIONS

Unit: mm (in.)

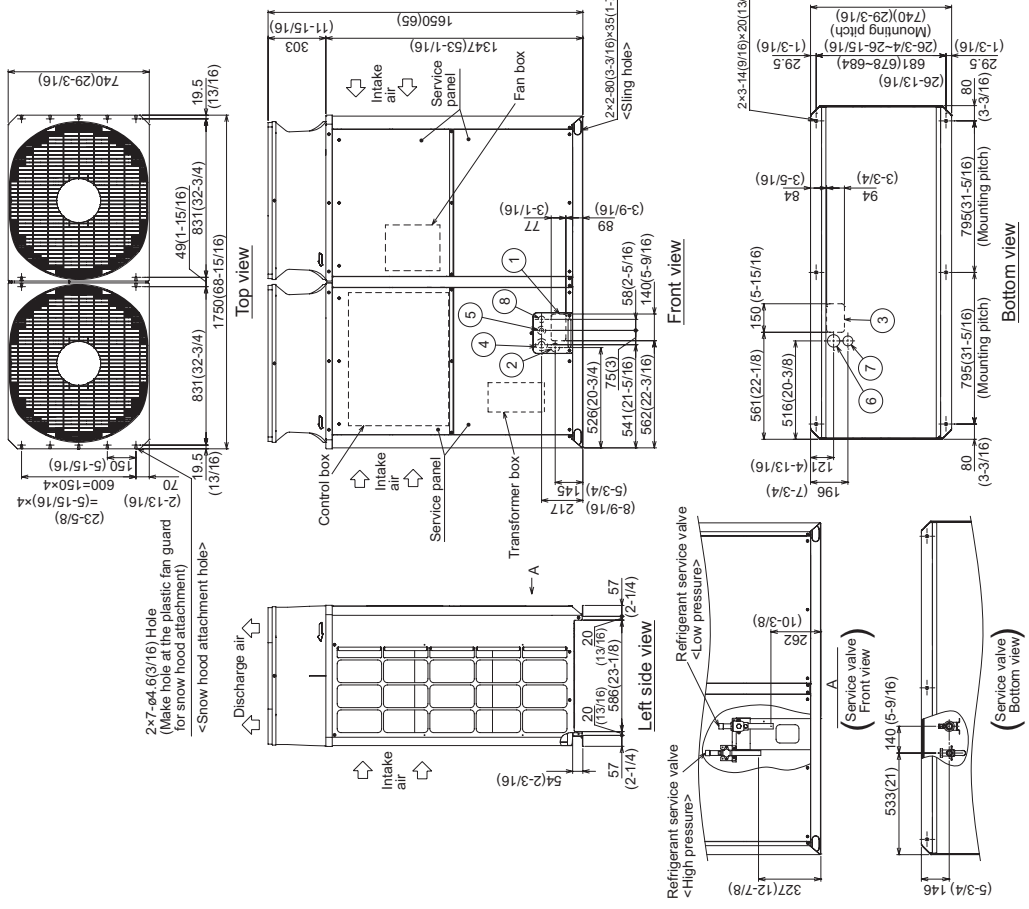
- <Accessories>
 • Connecting pipe
 • Elbow (ID ϕ 28.58(1-1/8) \times OD ϕ 28.58(1-1/8))... P120,P144,P168 1pc.
 • High pressure>
 • Pipe (ID ϕ 25.4(1) \times ID ϕ 19.05(3/4)) ... P120 1pc.
 • Pipe (ID ϕ 25.4(1) \times OD ϕ 19.05(3/4)) ... P120 1pc.
 • Pipe (ID ϕ 25.4(1) \times ID ϕ 22.2(7/8)) ... P144,P168 1pc.
 • Pipe (ID ϕ 25.4(1) \times OD ϕ 22.2(7/8)) ... P144,P168 1pc.
- Note1. Please refer to the engineering manual for information regarding necessary spacing around the unit and foundation work. Outdoor unit must be mounted at least 12" off the ground or 12" above the highest average snow depth, whichever is greater.
 2. At brazing of pipes, wrap the refrigerant service valve with wet cloth and keep the temperature of refrigerant service valve under 120°C(248°F).

Connecting pipe specifications

| Model | Refrigerant pipe | | Service valve | |
|---------------|---------------------------------------|---|-----------------|----------------------|
| | High pressure | Low pressure | High pressure | Low pressure |
| PURY-P120YLMU | ϕ 19.05 Brazed (3/4)" \times 1 | ϕ 28.58 Brazed (1-1/8)" \times 1 | ϕ 25.4 (1) | ϕ 28.58 (1-1/8) |
| PURY-P144YLMU | ϕ 22.2 Brazed (7/8)" \times 1 | ϕ 28.58 Brazed (1-1/8)" \times 1 | ϕ 25.4 (1) | ϕ 28.58 (1-1/8) |
| PURY-P168YLMU | ϕ 22.2 Brazed (7/8)" \times 1 | ϕ 28.58 Brazed (1-1/8)" \times 1 | ϕ 25.4 (1) | ϕ 28.58 (1-1/8) |

*1. Use the included connecting pipe and connect to the refrigerant service valve piping.

| NO. | Usage | Specifications |
|-----|--|---|
| ① | Front through hole | 140 \times 77 Knockout hole (5-9/16)(3-1/16) |
| ② | Front through hole (Uses when wiring kit (optional parts) is mounted.) | ϕ 45 Knockout hole (1-13/16) |
| ③ | Bottom through hole | 150 \times 94 Knockout hole (5-15/16)(3-3/4) |
| ④ | Front through hole | ϕ 62.7 or ϕ 34.5 Knockout hole (2-1/2)(1-3/8) |
| ⑤ | Front through hole | ϕ 43.7 or ϕ 22.2 Knockout hole (1-3/4)(7/8) |
| ⑥ | Bottom through hole | ϕ 65 Knockout hole (2-9/16) |
| ⑦ | Bottom through hole | ϕ 52 Knockout hole (2-1/16) |
| ⑧ | Front through hole | ϕ 34 Knockout hole (1-3/8) |



- NOTES:
 SEACOAST PROTECTION
- Anti-corrosion Protection: A coating treatment is applied to condenser coil for protection from air contaminants.
 - Standard: Salt Spray Test Method - no unusual rust development to 480 hours.
 - Sea Coast (BS): Salt Spray Test Method (JRA 9002) - no unusual rust development to 960 hours.



COOLING & HEATING
 1340 Satellite Boulevard, Suwanee, GA 30024
 Toll Free: 800-433-4822 www.mehvac.com

