

Job Name: _____	Location: _____
Drawing Reference: _____	Schedule No. _____
System No.: _____	Date: _____

GENERAL FEATURES



- R410A refrigerant
- Seven sizes from 6,000 to 30,000 Btu/h
- Powerful airflow (CFM)
- Compact, lightweight, shiny-white, flat-panel design
- Quiet operation
- Multiple fan-speed settings
- Intake grille filter is easily removed for cleaning
- Built-in receiver is standard

SPECIFICATIONS

Capacity*	
Cooling.....	8,000 Btu/h
Heating.....	9,000 Btu/h
Power	
Power Source.....	208 / 230V, 1-phase, 60Hz
Power Consumption	
Cooling.....	0.03 kW
Heating.....	0.03 kW
Current	
Cooling.....	0.15 A
Heating.....	0.15 A
Minimum Circuit Ampacity (MCA).....	0.19 A
Maximum Overcurrent Protection (MOCP) Fuse.....	15 A
External Finish	Munsell No. 1.0Y 9.2 / 0.2
External Dimensions	
Inches.....	11-5/8 H x 32-1/8 W x 8-7/8 D
mm.....	295 H x 815 W x 225 D

Net Weight	
Unit.....	22 lbs. / 10 kg
Coil Type	Cross Fin (Aluminum Plate Fin and Copper Tube)
Fan	
Type x Quantity.....	Line Flow Fan x 1
Airflow Rate (Low-Mid1-Mid2-High).....	170 - 180 - 200 - 210 CFM
Motor	
Type.....	One-phase Induction Motor
Output.....	0.008 kW
Air Filter	Polypropylene Honeycomb
Refrigerant Piping Dimensions	
Liquid (High Pressure).....	1/4" / 6.35 mm (Flare)
Gas (Low Pressure).....	1/2" / 12.7 mm (Flare)
Drainpipe Dimension	I.D. 5/8" / 16 mm
Sound Pressure Levels	
Low-Mid1-Mid2-High.....	32 - 33 - 35 - 36 dB(A)

OPTIONS

- Condensate Pump.....SI3100-230
- External Heat Adapter.....PAC-725AD
- CN24 Relay Kit.....CN24RELAY-KIT-CM

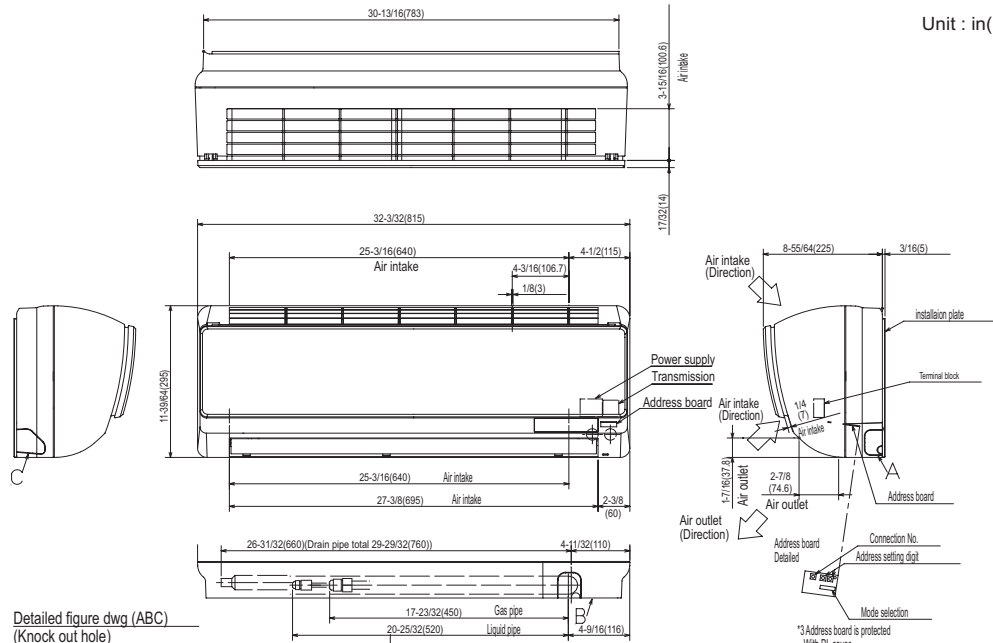
* Cooling / Heating capacity indicated at the maximum value at operation under the following conditions:
 Cooling: Indoor 80°F (27°C) DB / 67°F (19°C) WB, Outdoor 95°F (35°C) DB
 Heating: Indoor 70°F (21°C) DB, Outdoor 47°F (8°C) DB / 43°F (6°C) WB

Note: Ventilation air: Providing sufficient ventilation air is an important part of every building design. ASHRAE Standard 62 provides the minimum ventilation air requirement. Also, check local codes.

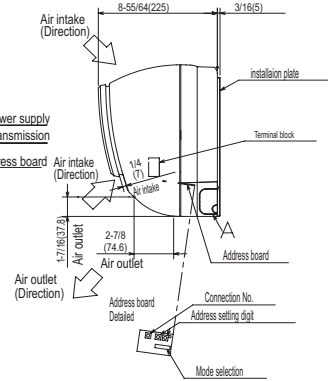
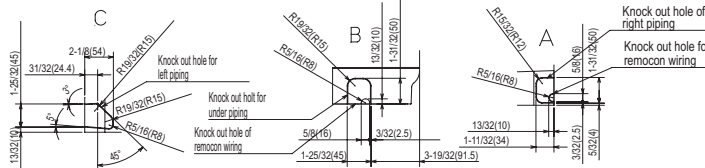


Model: PKFY-P08NBMU-E – DIMENSIONS

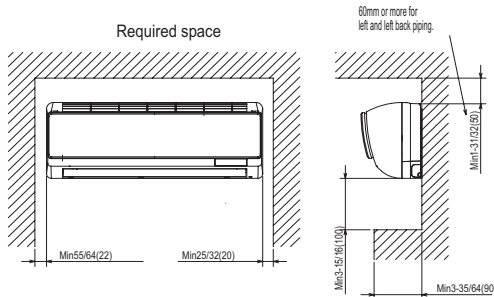
Unit : in(mm)



Detailed figure dwg (ABC)
(Knock out hole)



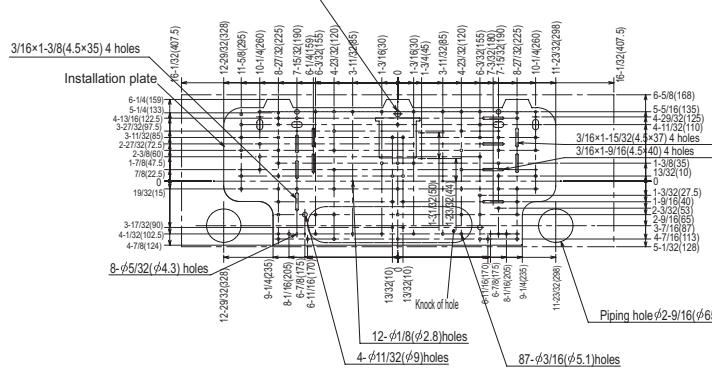
*3 Address board is protected with PL cover. Remove the screw with driver on the occasion of setting.



Note 1 Use M10 or W3/8 screw for installation plate.
Note 2 Extension piping side.
Note 3 In case of connecting MA-remote controller please MA-remote controller cable in accessories to the connector.

Refrigerant piping	Liquid pipe	1/4F (φ 6.35)
	Gas pipe	1/2F (φ 12.7)
	Drain pipe	φ 5/8 (φ 16) I.D

Installation plate balance point hole Details of installation plate



Mitsubishi Electric Air Conditioning & Refrigeration Systems Works acquired ISO 9001 certification under Series 9000 of the International Standard Organization (ISO) based on a review of quality warranties for the production of refrigeration and air conditioning equipment.

ISO Authorization System
The ISO 9000 series is a plant authorization system relating to quality warranties as stipulated by the ISO. ISO 9001 certifies quality warranties based on the "design, development, production, installation and auxiliary services" for products built at an authorized plant.



Mitsubishi Electric Air Conditioning & Refrigeration Systems Works acquired environmental management system standard ISO 14001 certification.

The ISO 14000 series is a set of standards applying to environmental protection set by the International Standard Organization (ISO).



HVAC Advanced Products Division
Mitsubishi Electric & Electronics USA, Inc.
3400 Lawrenceville Suwanee Rd.
Suwanee, GA 30024
Tele: 678-376-2900 • Fax: 800-889-9904
Toll Free: 800-433-4822 (#4)
www.mehvac.com
Specifications are subject to change without notice.