

Job Name:

Schedule Reference:

Date:



GENERAL FEATURES

- Dual set point functionality
- Compact, lightweight, shiny-white, flat-panel design
- Quiet operation
- Multiple fan-speed settings
- Intake grille filter is easily removed for cleaning
- Wireless receiver on board

OPTIONS

- Condensate Pump.....SI3100-230
- External Heat Adapter.....PAC-725AD
- CN24 Relay Kit.....CN24RELAY-KIT-CM3

SPECIFICATIONS

Capacity*

Cooling.....6,000 Btu/h
 Heating.....6,700 Btu/h

Power

Power Source.....208 / 230V, 1-phase, 60Hz

Power Consumption

Cooling..... 0.008 kW
 Heating.....0.03 kW

Current

Cooling..... 0.15 A
 Heating..... 0.15 A
 Minimum Circuit Ampacity (MCA).....0.19 A
 Maximum Overcurrent Protection (MOCP) Fuse.....15 A

External Finish.....Munsell No. 1.0Y 9.2 / 0.2

External Dimensions

Inches.....11-5/8 H x 32-1/8 W x 8-7/8 D
 mm.....295 H x 815 W x 225 D

Net Weight

Unit.....22 lbs. / 10 kg

Coil Type.....Cross Fin
 (Aluminum Plate Fin and Copper Tube)

Fan

Type x Quantity.....Line Flow Fan x 1
 Airflow Rate (Low-Mid1-Mid2-High).....170 - 180 - 200 - 210 CFM
 Motor Type.....One-phase Induction Motor

Air Filter.....Polypropylene Honeycomb

Refrigerant Piping Dimensions

Liquid (High Pressure).....1/4" / 6.35 mm (Flare)
 Gas (Low Pressure).....1/2" / 12.7 mm (Flare)

Drainpipe Dimension.....I.D. 5/8" / 16 mm

Sound Pressure Levels

Low-Mid1-Mid2-High.....32 - 33 - 35 - 36 dB(A)

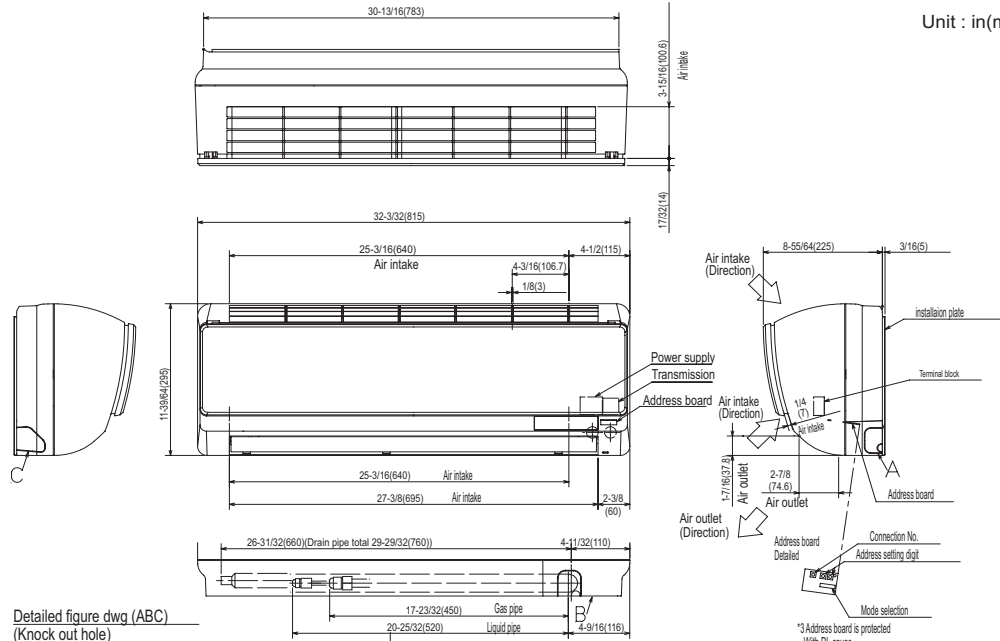
* Cooling / Heating capacity indicated at the maximum value at operation under the following conditions:
 Cooling | Indoor: 80° F (27° C) DB / 67° F (19° C) WB, Outdoor 95° F (35° C) DB
 Heating | Indoor: 70° F (21° C) DB, Outdoor 47° F (8° C) DB / 43° F (6° C) WB

Notes:

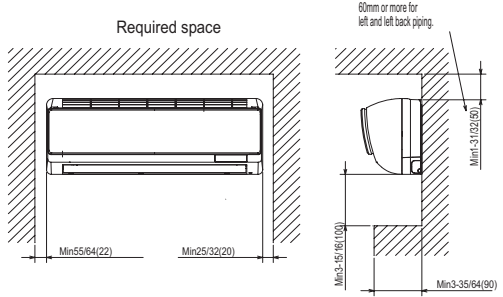
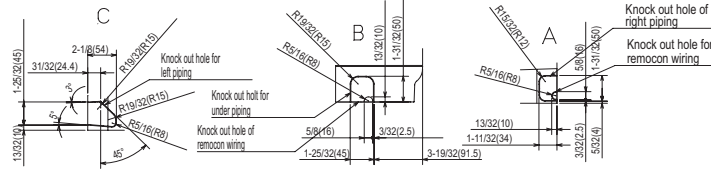


Model: PKFY-P06NBMU-E – DIMENSIONS

Unit : in(mm)

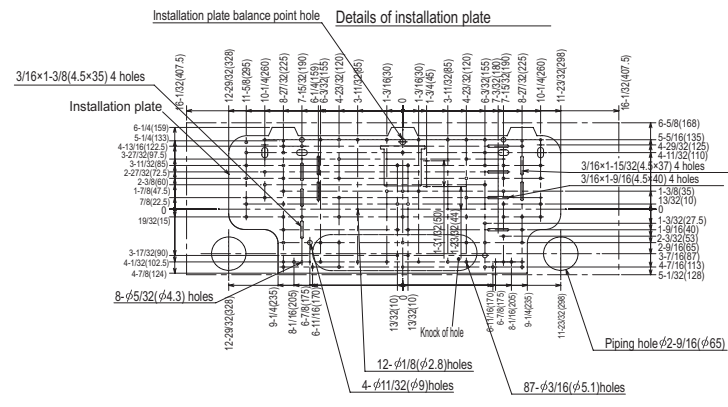


Detailed figure dwg (ABC)
(Knock out hole)



Note 1 Use M10 or W3/8 screw for installation plate.
 Note 2 Extension piping side.
 Note 3 In case of connecting MA-remote controller please
 MA-remote controller cable in accessories to the connector.

Refrigerant piping	Liquid pipe	1/4F (φ 6.35)
	Gas pipe	1/2F (φ 12.7)
	Drain pipe	φ 5/8 (φ 16) I.D



Intertek

FORM# PKFY-P06NBMU-E2 - 201308
 Specifications are subject to change without notice.
 © 2013 Mitsubishi Electric US, Inc.



COOLING & HEATING
 Live Better

1340 Satellite Boulevard
 Suwanee, GA 30024
 Tele: 678-376-2900 • Fax: 800-889-9904
 Toll Free: 800-433-4822
 www.mehvac.com