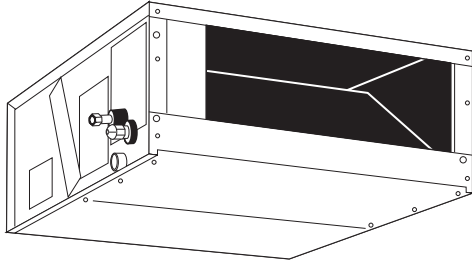


Job Name: \_\_\_\_\_

Drawing Reference: \_\_\_\_\_

Schedule No. \_\_\_\_\_



**GENERAL FEATURES**

- R410A or R22 refrigerant-compatible
- Ducted fan coil supports multiple configurations for flexible installation
- High external static pressure capabilities
- Multiple sizes up to 96,000 Btu/h
- Quiet operation: 25-54 dB(A)

**SPECIFICATIONS**

**Capacity\***

Cooling . . . . . 96,000 Btu/h  
 Heating . . . . . 108,000 Btu/h

**Power**

Power Source . . . . . 208-230V, 3 phase, 60Hz  
 Power Consumption  
     Cooling . . . . . 1.690 / 1.870 kW  
     Heating . . . . . 1.690 / 1.870 kW  
 Current  
     Cooling . . . . . 5.69 / 6.28 A  
     Heating . . . . . 5.69 / 6.28 A  
 Minimum Circuit Ampacity (MCA) (208/230) . . . . . 7.12 / 7.85 A  
 Maximum Overcurrent Protection (MOCP). . . . . 15A

**External Finish** . . . . . Galvanized steel plate

**Dimensions**

Inches . . . . . 18-17/32 h x 49-7/32 w x 44-1/8 d  
 mm . . . . . 470 h x 1250 w x 1120 d

**Net Weight**. . . . . 221 lb / 100 kg

**Coil Type** . . . . . Cross fin  
 (aluminum plate fin and copper tube)

**Fan**

Type x Quantity . . . . . Sirocco fan x 2  
 Airflow Rate . . . . . 2541 CFM  
 External Static Pressure

@ 208V . . . . . 0.28 - 0.64 (default) in. WG  
 @ 230V . . . . . 0.40 - 0.80 (default) in. WG

**Motor**

Type . . . . . Three phase induction motor  
 Output . . . . . 0.850 kW

**Air Filter** . . . . . Filter must be procured locally

**Refrigerant Pipe Dimensions**

**R410A**

Liquid . . . . . 3/8" / 9.52 mm brazed  
 Gas . . . . . 7/8" / 22.2 mm brazed

**R22**

Liquid . . . . . 1/2" / 12.7 mm brazed  
 Gas . . . . . 1-1/8" / 28.58 mm brazed

**Drainpipe Dimension** . . . . . O.D.1-1/4" / 32 mm

**Sound Level**

@ 208V . . . . . 52 dB(A)  
 @ 230V . . . . . 54 dB(A)

**Options**

- Drain pump kit. . . . . PAC-KE04DM-F
- Condensate pump . . . . . SI1730-230
- Long-life filter . . . . . PAC-KE85LAF
- Filter box. . . . . PAC-KE250TB-F

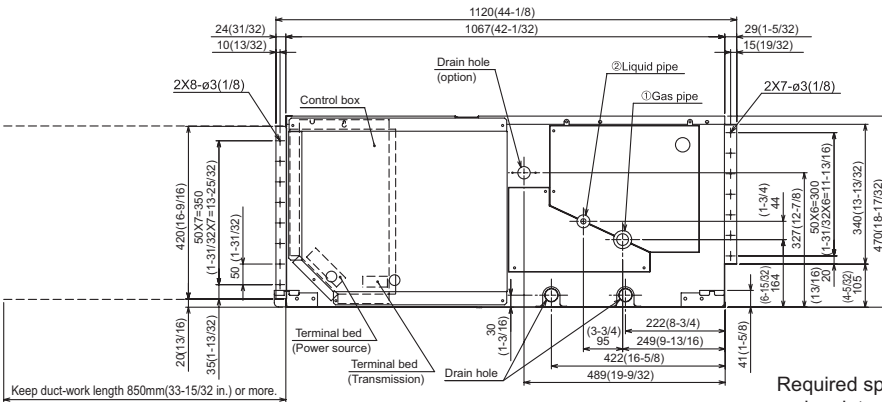
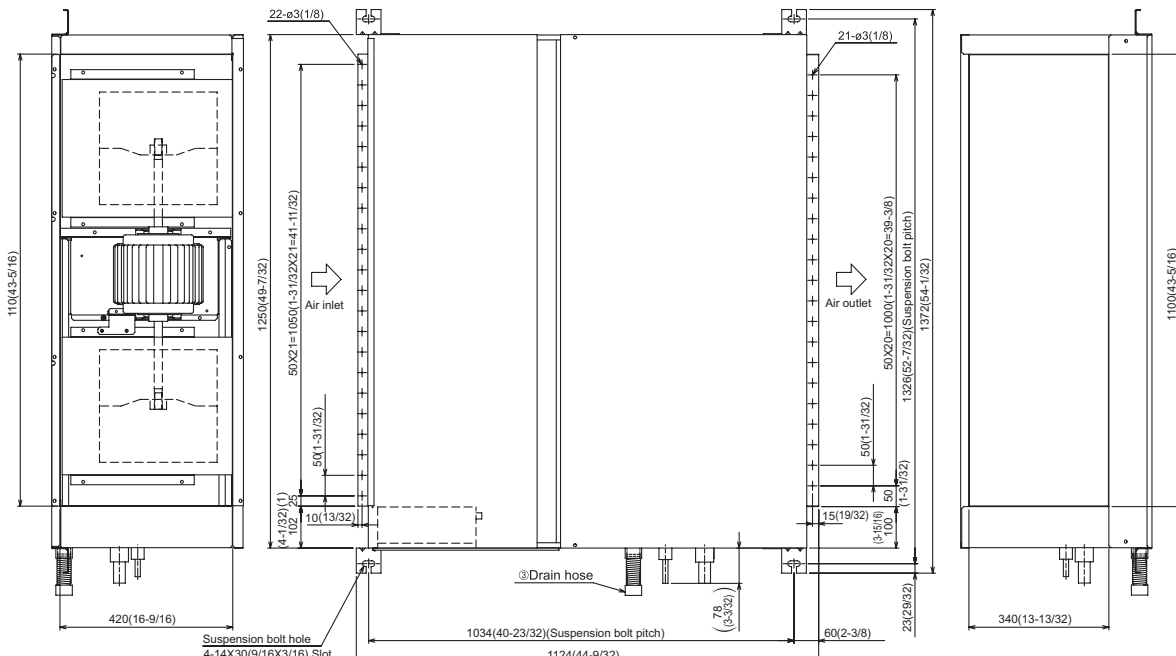
\* Cooling / Heating capacity indicated the maximum value at operation under the following conditions:

Cooling: Indoor 80°F (27°C) DB / 67°F (19°C) WB, Outdoor 95°F (35°C) DB  
 Heating: Indoor 70°F (21°C) DB, Outdoor 47°F (8°C) DB / 43°F (6°C) WB

\*\* Ventilation air: providing sufficient ventilation air is an important part of every building design. ASHRAE Standard 62 provides the minimum ventilation air requirements. Also check local codes.

Notes:

# Model: PEFY-P96NMHU-E

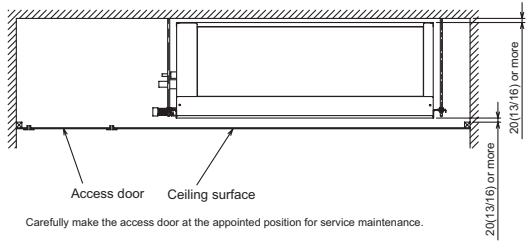
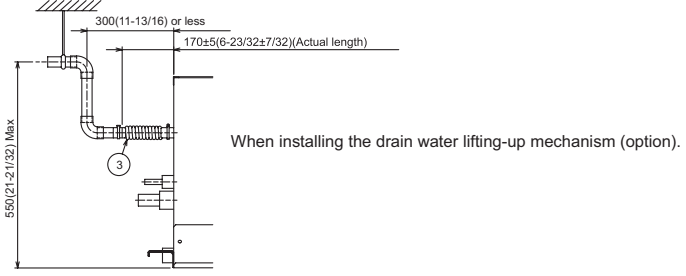
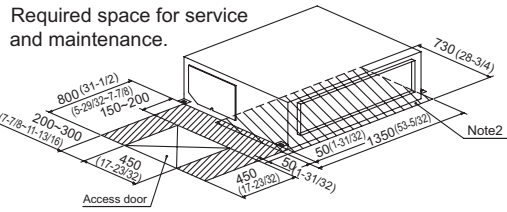


- Note 1. Use M10 screw for the suspension bolt (field supply).  
 2. Keep the service space for the maintenance from the bottom when the heat exchanger is cleaned.  
 3. Make sure to install the air filter (field supply) on the air intake side.  
 In case field supplied air filter is used: attach it where the filter service is easily done.  
 4. In this model, use pipe packed with the indoor unit when connecting the outdoor unit for R22.

Keep duct-work length 850mm(33-15/32 in.) or more.

Model	① Gas pipe <Brazing>	② Liquid pipe <Brazing>	③ Drain hose
PEFY-P72NMHU-E	#1 ø19.05(3/4) #2 ø25.4 (1)	#1 ø9.52(3/8) #2 ø12.7(1/2)	Drain hose 32mm (1-1/4inch) <flexible joint > (accessory)
PEFY-P96NMHU-E	#1 ø22.2 (7/8) #2 ø28.58(1-5/32)	#1 ø9.52(3/8) #2 ø12.7(1/2)	

<Brazing>  
 #1:R410A outdoor unit  
 #2:R22 outdoor unit



Mitsubishi Electric Air Conditioning & Refrigeration Systems Works acquired ISO 9001 certification under Series 9000 of the International Standard Organization (ISO) based on a review of quality warranties for the production of refrigeration and air conditioning equipment.

ISO Authorization System  
 The ISO 9000 series is a plant authorization system relating to quality warranties as stipulated by the ISO. ISO 9001 certifies quality warranties based on the "design, development, production, installation and auxiliary services" for products built at an authorized plant.



**HVAC Advanced Products Division**  
 Mitsubishi Electric & Electronics USA, Inc.

3400 Lawrenceville Suwanee Rd.  
 Suwanee, GA 30024  
 Tel: 678-376-2900 • Fax: 800-889-9904  
 Toll Free: 800-433-4822 (#4)  
 www.mehvac.com



Mitsubishi Electric Air Conditioning & Refrigeration Systems Works acquired environmental management system standard ISO 14001 certification.

The ISO 14000 series is a set of standards applying to environmental protection set by the International Standard Organization (ISO).