

Job Name:

Schedule Reference:

Date:



GENERAL FEATURES

- Dual set point functionality
- High external static pressure capabilities
- Ducted fan coil supports multiple configurations for flexible installation
- Built-in condensate pump; lifts to 27-9/16 inches
- Suitable for use in air handling spaces in accordance with Section 18.2 of UL 1995 4th Edition

OPTIONS

- Condensate Pump.....BlueDiamond X87-711/721; 115/230V
- Condensate Pump.....Sauermann SI30-115/230; 115/230V
- Filter Box (Includes 2" MERV 13 filter).....FBH2-2
- CN24 Relay Kit.....CN24RELAY-KIT-CM3

SPECIFICATIONS

Capacity*
 Cooling.....27,000 Btu/h
 Heating.....30,000 Btu/h

Power
 Power Source.....208 / 230V, 1-phase, 60Hz

Power Consumption*
 Cooling.....0.39 / 0.39 kW
 Heating.....0.37 / 0.37 kW

Current*
 Cooling.....1.90 / 1.73 A
 Heating.....1.79 / 1.62 A

Minimum Circuit Ampacity (MCA)
 @ 208V.....2.35 A
 @ 230V.....2.13 A

Fuse Size.....15 A

External Finish.....Galvanized-steel Sheet

External Dimensions
 Inches.....15 H x 40-9/16 W x 35-7/16 D
 mm.....380 H x 1,030 W x 900 D

Net Weight.....124 lbs. / 56 kg

Coil Type.....Cross Fin
 (Aluminum Plate Fin and Copper Tube)

Fan
 Type x Quantity.....Sirocco Fan x 2
 Airflow Rate (Low - High).....547 - 777 CFM
 External Static Pressure
 @ 208V.....0.40 - 1.00" WG
 @ 230V.....0.60 - 1.00" WG
 Motor Type.....1-phase induction motor

Refrigerant Piping Dimensions
 Liquid (High Pressure).....3/8" / 9.52 mm (Brazed)
 Gas (Low Pressure).....5/8" / 15.88 mm (Brazed)

Drainpipe Dimension.....O.D. 1-1/4" / 32 mm

Sound Pressure Levels
 Low - High.....38 - 44 dB(A)

* Cooling / Heating capacity indicated at operation under the following conditions:
 Cooling | Indoor: 80° F (27° C) DB / 67° F (19° C) WB,
 Cooling | Outdoor 95° F (35° C) DB
 Heating | Indoor: 70° F (21° C) DB,
 Heating | Outdoor 47° F (8° C) DB / 43° F (6° C) WB

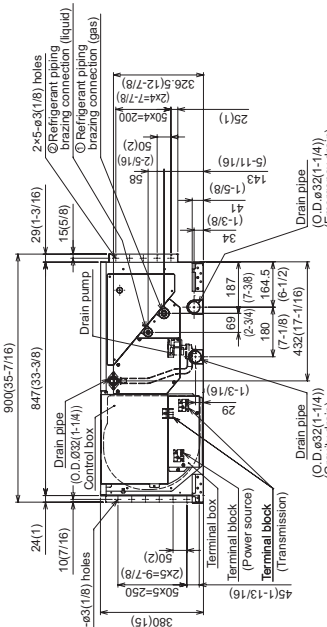
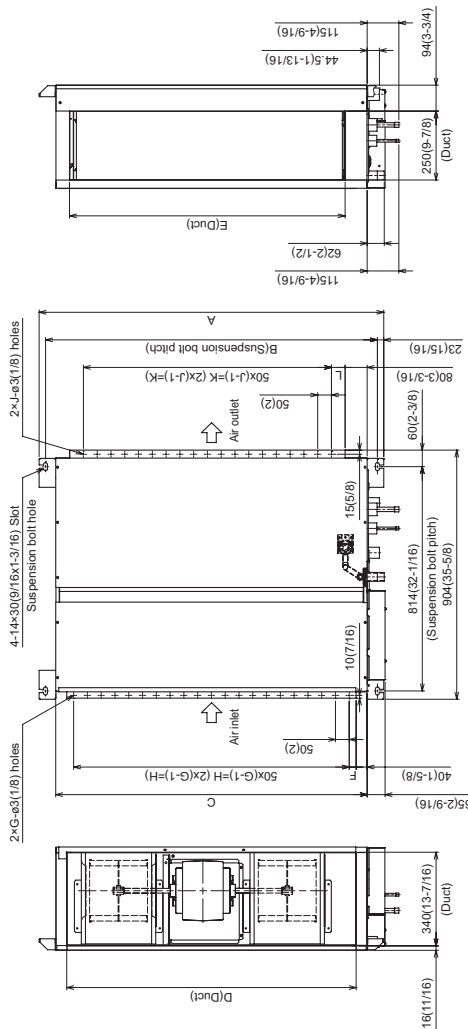
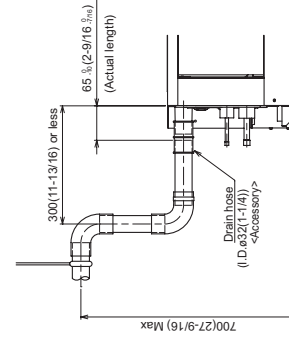
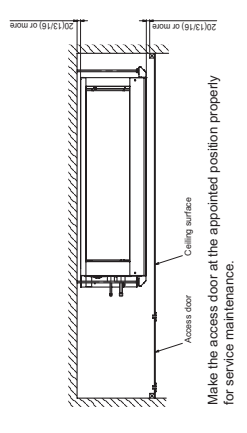
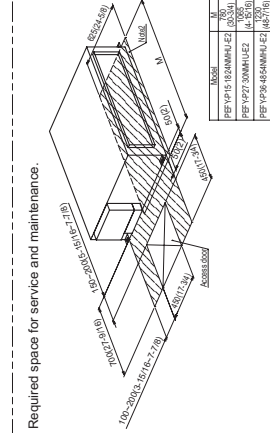
Notes:



Model: PEFY-P27NMHU-E2 – DIMENSIONS

Unit : mm(in.)

- Note 1 Use an M10 screw for the suspension bolt (field supply).
- 2. Keep the service space for the maintenance from the bottom when the heat exchanger is cleaned.
- 3. This drawing is for PEFY-P27-30-36-48-54NMHU-E2 models, which have 2 fans. PEFY-P15-18-24NMHU-E2 models have 1 fan.
- 4. Make sure to install the air filter (field supply) on the air intake side. In case field supplied air filter is used, attach it where the filter service is easily done.



| Model | A | B | C | D | E | F | G | H | J | K | L | M | N | |
|-----------------------|------------------|--------------------|------------------|------------------|------------------|-------------------|-----------------|------------------|-----------------|------------------|-----------------|-----------|-----------|-----------|
| PEFY-P15-18NMHU-E2 | 890 (35-1/2) | 764 (30-1/2) | 689 (27-1/8) | 638 (25-1/8) | 650 (25-9/16) | 50 (2) | 50 (2) | 50 (2) | 50 (2) | 50 (2) | 50 (2) | 50 (2) | 50 (2) | 50 (2) |
| PEFY-P27-30NMHU-E2 | 1065 (42-3/4) | 1039 (40-15/16) | 965 (38) | 885 (34-7/8) | 835 (32-7/8) | 42.5 (1-11/16) | 17 (3/4) | 800 (31-1/2) | 15 (3/4) | 700 (27-9/16) | 67 (2-11/16) | 50 (2) | 50 (2) | 50 (2) |
| PEFY-P36-48-54NMHU-E2 | 1260 (49-1/4) | 1204 (47-7/16) | 1130 (44-1/2) | 1050 (41-3/8) | 1000 (39-3/8) | 25 (1) | 21 (35-7/16) | 1000 (39-3/8) | 19 (35-7/16) | 900 (35-7/16) | 50 (2) | 50 (2) | 50 (2) | 50 (2) |



Intertek

FORM# PEFY-P27NMHU-E2 - 201405

Specifications are subject to change without notice.
© 2014 Mitsubishi Electric US, Inc.



COOLING & HEATING

1340 Satellite Boulevard
Suwanee, GA 30024
Toll Free: 800-433-4822
www.mehvac.com