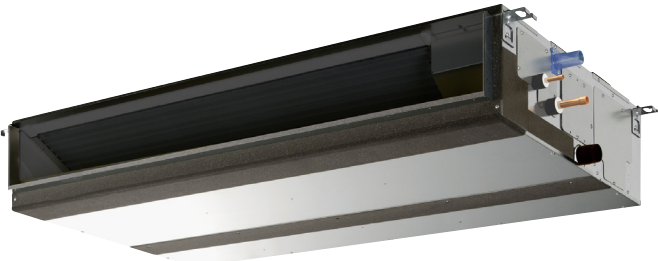


Job Name: _____	Location: _____
Drawing Reference: _____	Schedule No. _____
System No.: _____	Date: _____



### GENERAL FEATURES

- R410A refrigerant
- 9-7/8" (250mm) high for low ceiling heights
- Eleven sizes from 6,000 to 54,000 Btu/h
- Ducted fan coil supporting multiple configurations for flexible installation
- Five static pressure settings from 0.14"WG up to 0.60"WG
- Choice of fan speed settings
- Built-in condensate lift; lifts to 27-9/16" (700mm)
- Auto fan mode
- Quiet operation from 26 to 45 dB(A)

### SPECIFICATIONS

#### Capacity\*

Cooling.....27,000 Btu/h  
 Heating.....30,000 Btu/h

#### Power

Power Source.....208 / 230V, 1-phase, 60Hz

#### Power Consumption

Cooling.....0.14 kW  
 Heating.....0.12 kW

#### Current

Cooling.....1.18 A  
 Heating.....1.07 A  
 Minimum Circuit Ampacity (MCA).....2.49 A  
 Maximum Overcurrent Protection (MOCP) Fuse.....15 A

External Finish.....Galvanized-steel Sheet

#### External Dimensions

Inches.....9-7/8 H x 43-5/16 W x 28-7/8 D  
 mm.....250 H x 1,100 W x 732 D

#### Net Weight

Unit.....71 lbs. / 32 kg

Coil Type.....Cross Fin  
 (Aluminum Plate Fin and Copper Tube)

#### Fan

Type x Quantity.....Sirocco Fan x 2  
 Airflow Rate (Low-Mid-High).....512 - 636 - 742 CFM  
 External Static Pressure.....0.14 - 0.20 - 0.28 - 0.40 - 0.60"WG  
 (External static pressure is factory set to 0.20"WG)

#### Motor

Type.....DC Brushless Motor  
 Output.....0.121 kW

Air Filter.....Polypropylene Honeycomb

#### Refrigerant Piping Dimensions

Liquid (High Pressure).....3/8" / 9.52 mm (Brazed)  
 Gas (Low Pressure).....5/8" / 15.88 mm (Brazed)

Drainpipe Dimension.....O.D. 1-1/4" / 32 mm

#### Sound Pressure Levels

Low-Mid-High.....30 - 34 - 38 dB(A)

### OPTIONS

- External Heater Adapter.....CN24RELAY-KIT-CM3
- Filter Box (Includes 2" MERV 13 filter).....FBM2-3

\* Cooling / Heating capacity indicated at the maximum value at operation under the following conditions:

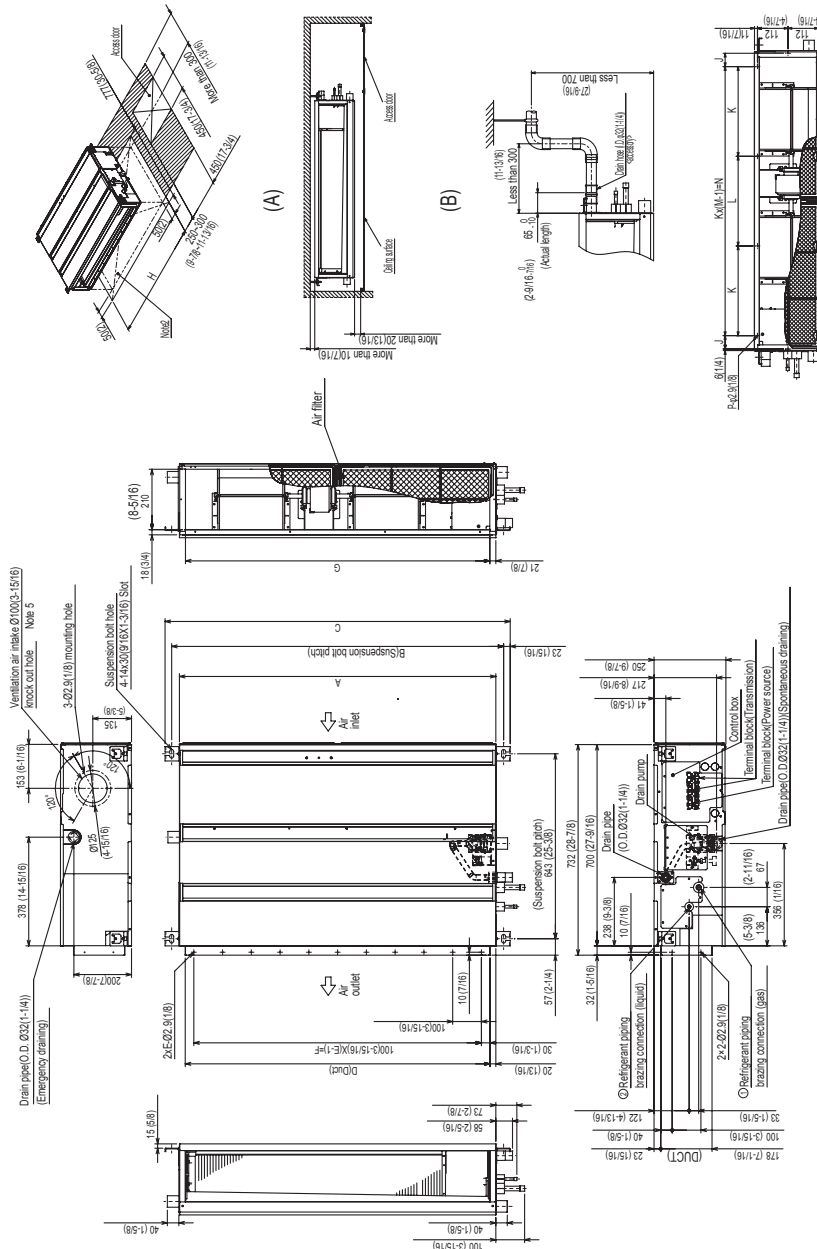
Cooling: Indoor 80°F (27°C) DB / 67°F (19°C) WB, Outdoor 95°F (35°C) DB

Heating: Indoor 70°F (21°C) DB, Outdoor 47°F (8°C) DB / 43°F (6°C) WB

**Note:** Ventilation air: Providing sufficient ventilation air is an important part of every building design. ASHRAE Standard 62 provides the minimum ventilation air requirement. Also, check local codes.



# Model: PEFY-P27NMAU-E – DIMENSIONS



Model	A	B	C	D	E	F	G	H	J	K	L	M	N	P	Unit:mm(in.)
PEFY-P06,08,12NMAU-E	700 (27.559)	754 (29.685)	800 (31.500)	660 (25.984)	7	600 (23.622)	655 (25.787)	800 (31.500)	44 (1.732)	150 (5.906)	300 (11.811)			10	Ø12.7 (0.504)
PEFY-P15,18NMAU-E	1100 (43.307)	1154 (45.433)	1200 (47.244)	1060 (41.732)	9	1000 (39.370)	1055 (41.535)	1200 (47.244)	49 (1.929)	350 (13.780)	4		700 (27.559)	10	Ø12.7 (0.504)
PEFY-P24,27,30NMAU-E	1400 (55.118)	1454 (57.244)	1500 (59.055)	1360 (53.543)	11	1300 (51.181)	1355 (53.346)	1500 (59.055)	54 (2.126)	320 (12.598)	4		900 (35.433)	10	Ø15.88 (0.625)
PEFY-P36,48NMAU-E	1600 (63.000)	1654 (65.126)	1700 (66.929)	1560 (61.417)	14	1500 (59.055)	1555 (61.220)	1700 (66.929)	54 (2.126)	370 (14.567)	5		1480 (58.272)	12	Ø15.88 (0.625)
PEFY-P54NMAU-E	1600 (63.000)	1654 (65.126)	1700 (66.929)	1560 (61.417)	16	1500 (59.055)	1555 (61.220)	1700 (66.929)	54 (2.126)	370 (14.567)	5		1480 (58.272)	12	Ø15.88 (0.625)



Mitsubishi Electric Air Conditioning & Refrigeration Systems Works acquired ISO 9001 certification under Series 9000 of the International Standard Organization (ISO) based on a review of quality warranties for the production of refrigeration and air conditioning equipment.

ISO Authorization System  
 The ISO 9000 series is a plant authorization system relating to quality warranties as stipulated by the ISO. ISO 9001 certifies quality warranties based on the "design, development, production, installation and auxiliary services" for products built at an authorized plant.



Mitsubishi Electric Air Conditioning & Refrigeration Systems Works acquired environmental management system standard ISO 14001 certification.

The ISO 14000 series is a set of standards applying to environmental protection set by the International Standard Organization (ISO).



## HVAC Advanced Products Division

Mitsubishi Electric & Electronics USA, Inc.  
 3400 Lawrenceville Suwanee Rd.  
 Suwanee, GA 30024  
 Tele: 678-376-2900 • Fax: 800-889-9904  
 Toll Free: 800-433-4822 (#4)  
 www.mehvac.com

Specifications are subject to change without notice.